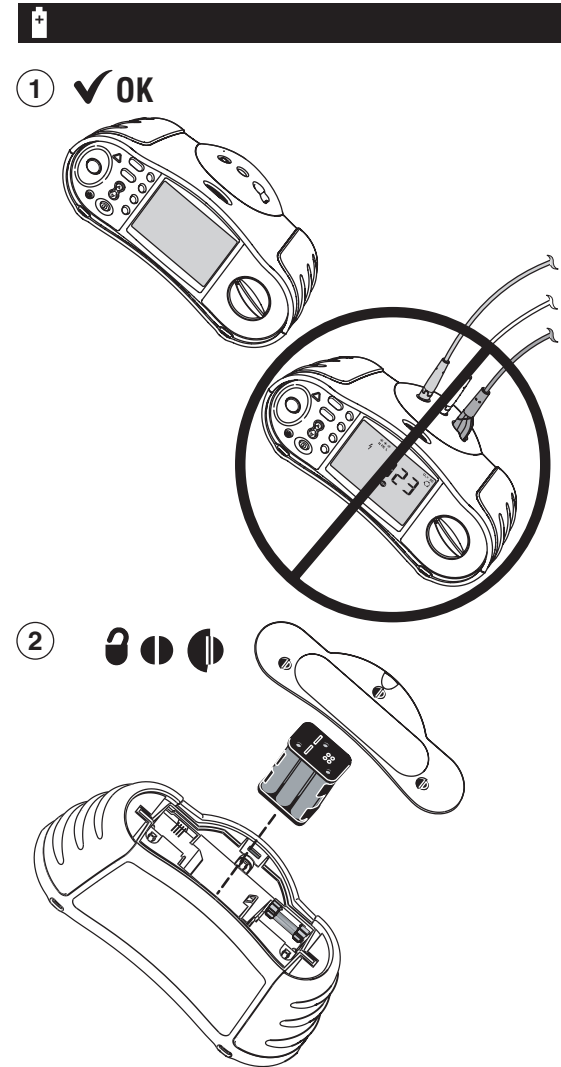
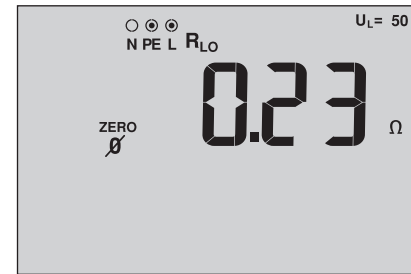
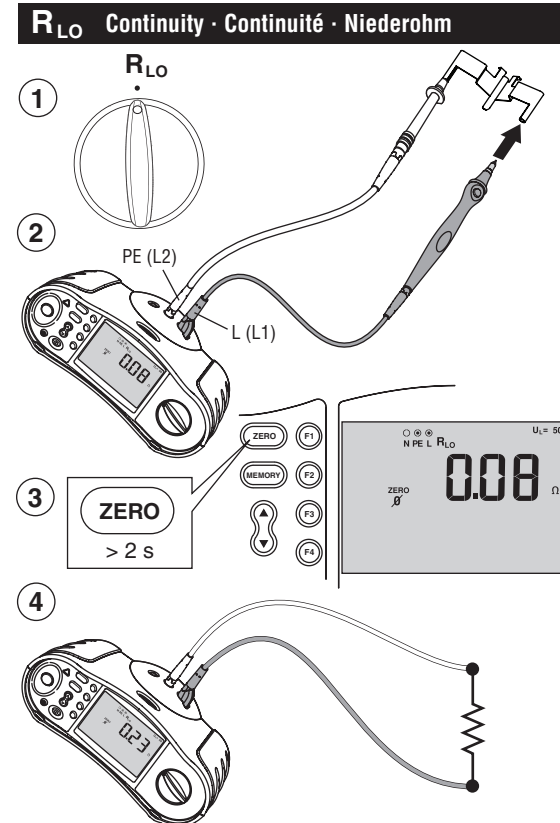
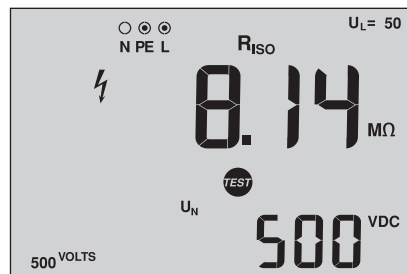
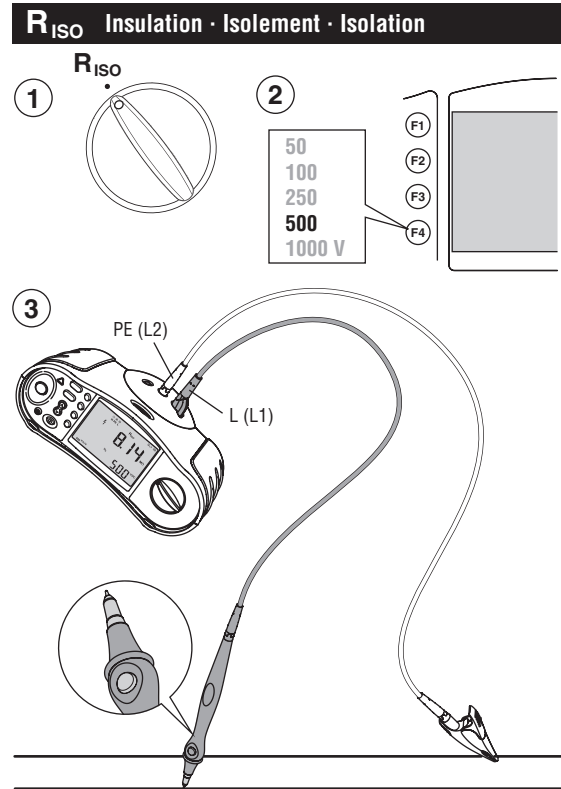
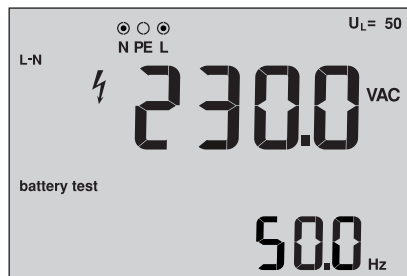
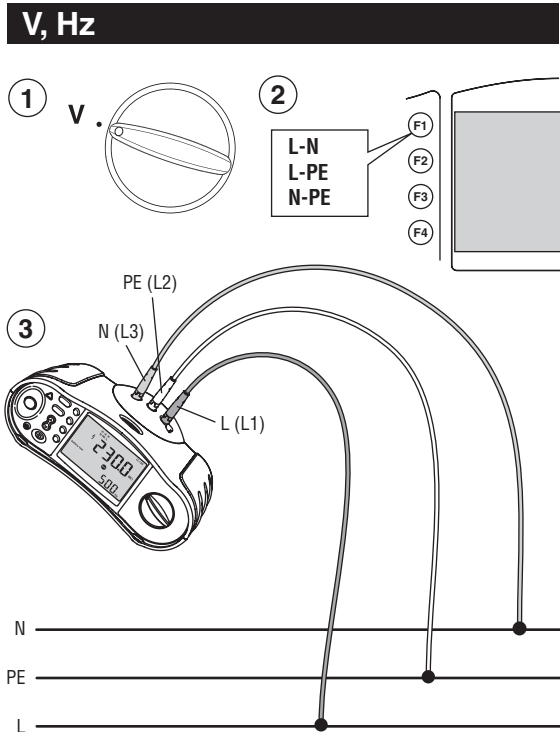
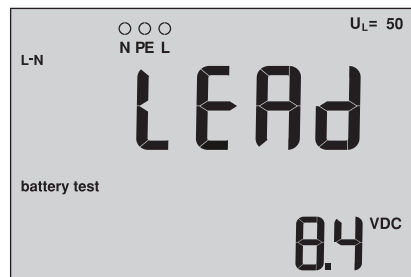
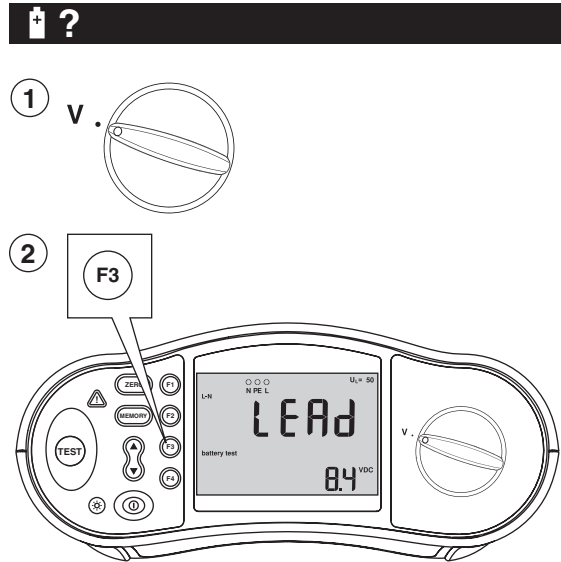


# 1652C/1653B/1654B Quick Reference Guide

## ⚠ Warning

- Read the Users Manual before using the tester.
- Lisez le mode d'emploi avant d'utiliser le testeur.
- Leggere il manuale d'uso prima di usare il tester.
- Vor dem Gebrauch des Testgeräts das Bedienungshandbuch lesen.
- Lea el Manual de uso del comprobador antes de utilizarlo.
- Leia o Manual do Usuário antes de usar o testador.
- Lees de gebruiksaanwijzing vóór gebruik van de tester.
- Les bruksanvisningen før måleinstrumentet tas i bruk.
- Man bør læse brugsanvisningen til modelserie, inden instrumentet tages i brug.
- Lue käyttöopas ennen tämän testerin käyttöä.
- Läs användarhandboken innan du använder testinstrumentet.
- Test cihazını kullanmadan önce Kullanım Kılavuzunu okuyun.
- Przed użyciem testera należy zapoznać się z jego instrukcją użytkownika.
- Прочитайте руководство пользователя перед использованием измерителя сопротивления изоляции.
- Před použitím měřiče si přečtěte Uživatelskou příručku k přístroji.



**Z<sub>1</sub> Loop · Boucle · Schleife**

1 **Z<sub>1</sub> NO TRIP**

2

3 **ZERO**  $> 2\text{ s}$   $Z_L U_L = 50$   $N\ PE\ L\ R_{LO}$   $ZERO\ \emptyset$  **0.08**  $\Omega$

4

5 **L-PE** F1 **L-N** F2 **I<sub>k</sub>** F3 **R<sub>E</sub>** F4

6 **TEST**  $Z_L U_L = 50$   $L-PE$   $N\ PE\ L$   $ZERO\ \emptyset$  **0.23**  $\Omega$   $I_k$  **PEFC<sub>k</sub> 1000** A

**Z<sub>1</sub> Loop · Boucle · Schleife**

1 **LOOP Z<sub>1</sub> HI CURRENT**

2 **N** **PE** **L**

3 **ZERO**  $> 2\text{ s}$   $Z_L U_L = 50$   $N\ PE\ L\ R_{LO}$   $ZERO\ \emptyset$  **0.08**  $\Omega$

4 **N** **PE** **L**

5 **L-PE** F1 **L-N** F2  $\Omega$  F3  $m\Omega$  F4

6 **TEST**  $Z_L U_L = 50$   $L-PE$   $N\ PE\ L$   $ZERO\ \emptyset$  **0.23**  $\Omega$   $I_k$  **PEFC<sub>k</sub> 1000** A

**$\Delta T / I_{\Delta N}$  RCD · Disjoncteur différentiel · FI**

1  **$\Delta T / I_{\Delta N}$**

2 **L** **N** **PE**

3 **10** **30** **50** **100** **300** **500** **1000** **Var** **x1/2** **x1** **x5** **Auto** **0°** **180°**  $U_L = 50$   $N\ PE\ L$  **310** **mS**

4 **TEST**

5 **F1** **F2** **F3** **F4**

6 **30** **mA**  $U_L = 50$   $N\ PE\ L$  **310** **mS** **0°** **U<sub>F</sub> 100** **VAC**

**R<sub>E</sub> Earth · Terre · Erde**

1 **R<sub>E</sub>** **PE**

2 **N** **L** **PE**

3 **PE (E)** **N (S)** **L (H)** **62% L** **L**

4 **TEST**  $U_L = 50$   $N\ PE\ L$  **20.5**  $\Omega$

**Phase rotation · Rotation de phase · Phasenfolge**

1 **L1** **L2** **L3**

2 **N** **L** **PE** **L1** **L2** **L3**

3  $U_L = 50$   $N\ PE\ L$  **123**

4 **321** **--**

**IR**

1 **IR**

2 **IR**