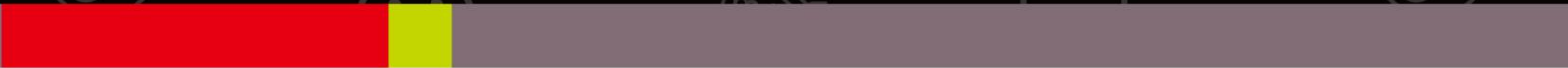




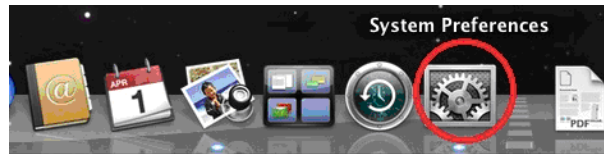
# Macintosh Installation Guide

07-2012 / v1.0



## Web Management Interface

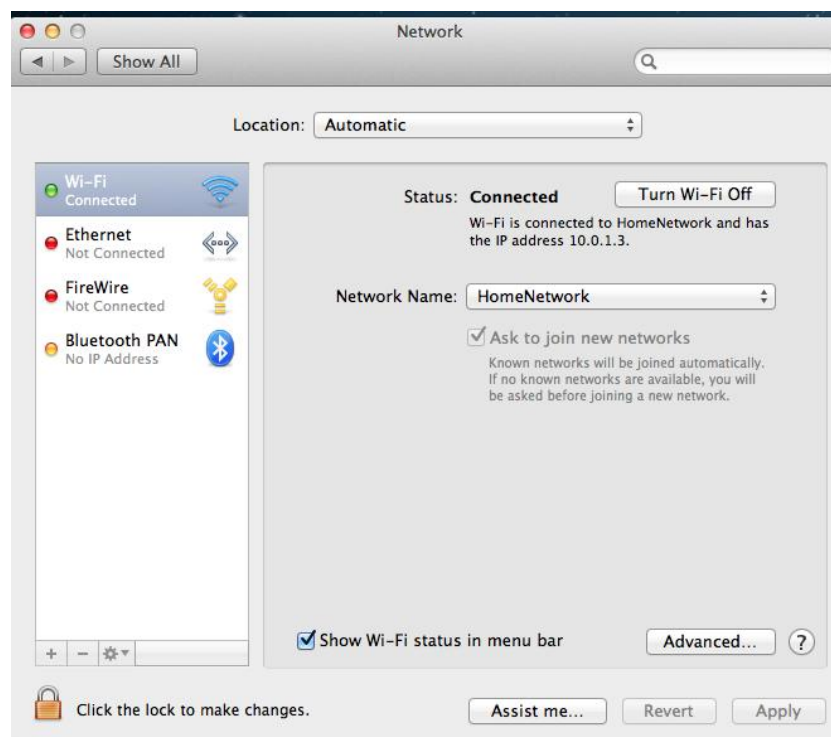
1. Have your Macintosh computer operate as usual, and click on “System Preferences”.



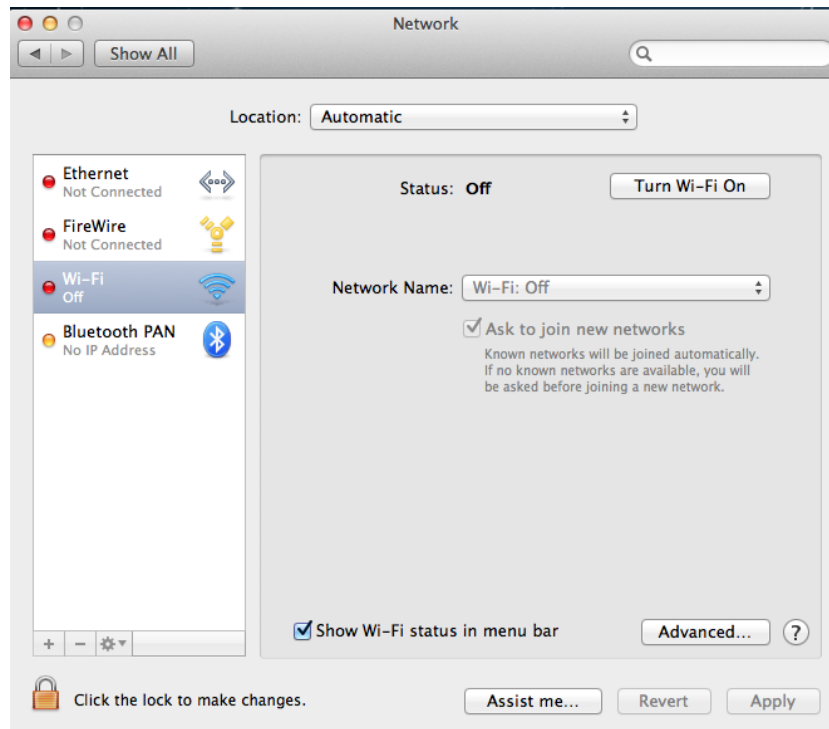
2. In System Preferences, click on “Network”.



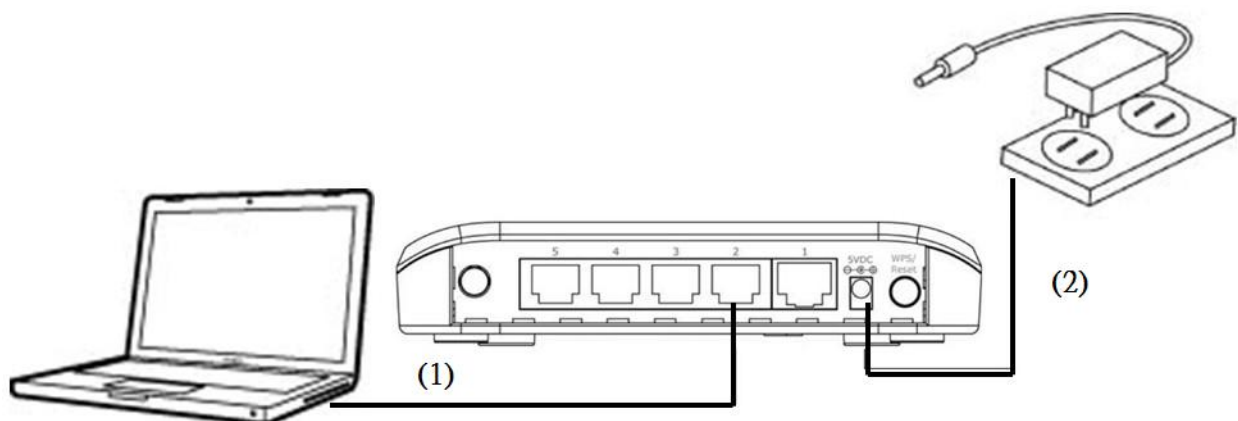
3. Here you will see all of your network connections. Remove any Ethernet cable that may be connected, so that the “Ethernet” status in the left sidebar displays “Not Connected”, as shown below. Then, you need to ensure that your Macintosh’s Wi-Fi is switched off. Select “Wi-Fi” from the left sidebar.



4. If your Wi-Fi is switched on, click on the button labeled “Turn Wi-Fi Off”. The “Network” screen should now look like the screen below, where under the heading “Wi-Fi” in the left sidebar, the status is shown as “Off”.

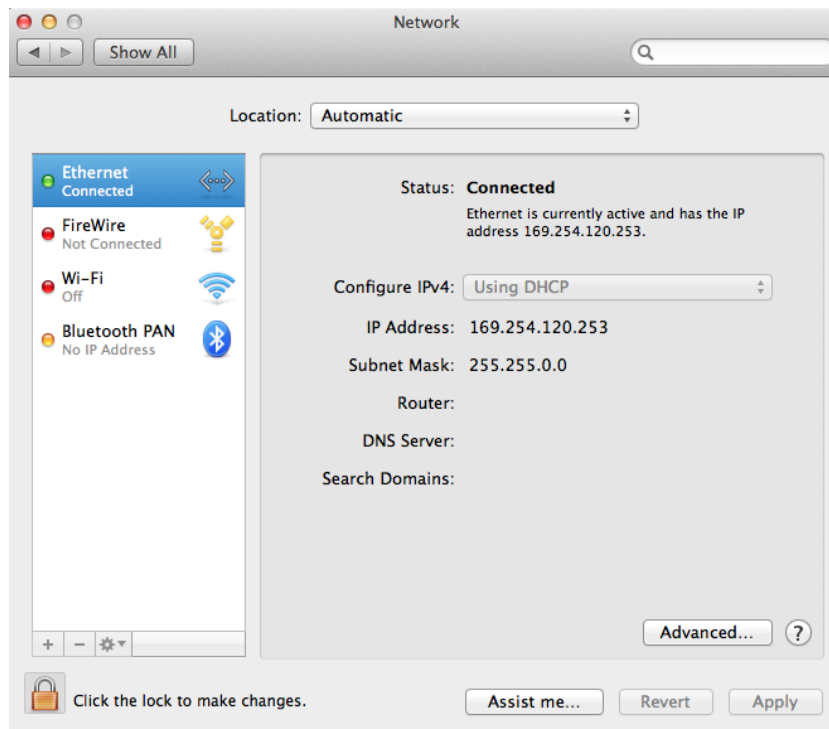


5. Connect one end of an Ethernet cable to the Ethernet port on your computer. Then connect the other end to an Ethernet port on the access point, as shown below (1). Plug the power adapter into the device's 5V power port, and plug the adapter into a wall socket (2).

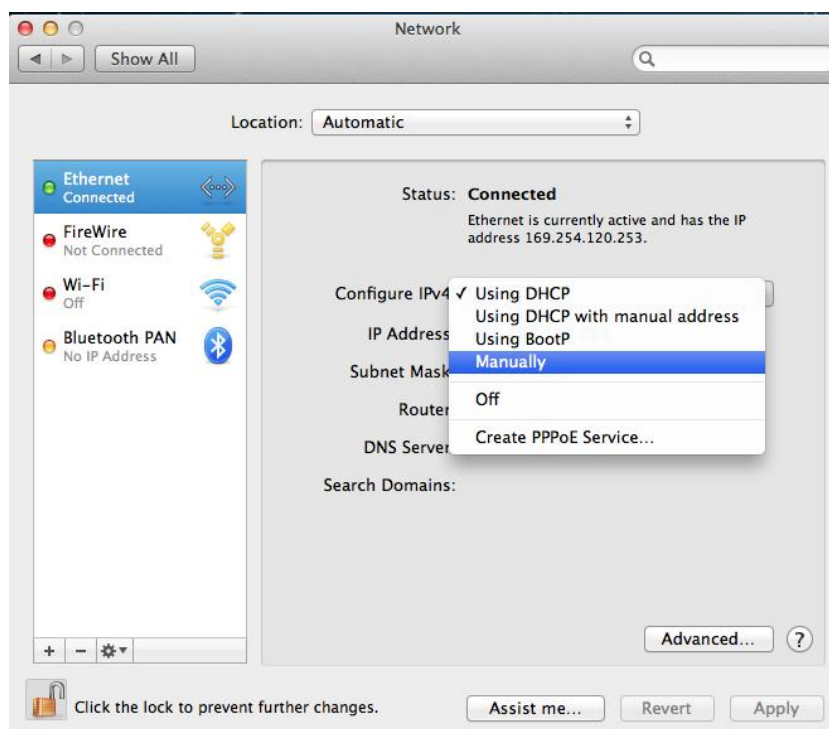


The PWR LED and corresponding LAN LED on the access point should now light up.

6. Network Preferences will now display an Ethernet adapter, as shown below. The status of "Ethernet" should be "Connected".



7. Click on “Ethernet” in the left panel and then click the drop down arrow for the menu labeled “Configure IPv4” in the right panel. From the drop down menu, select “Manually”.



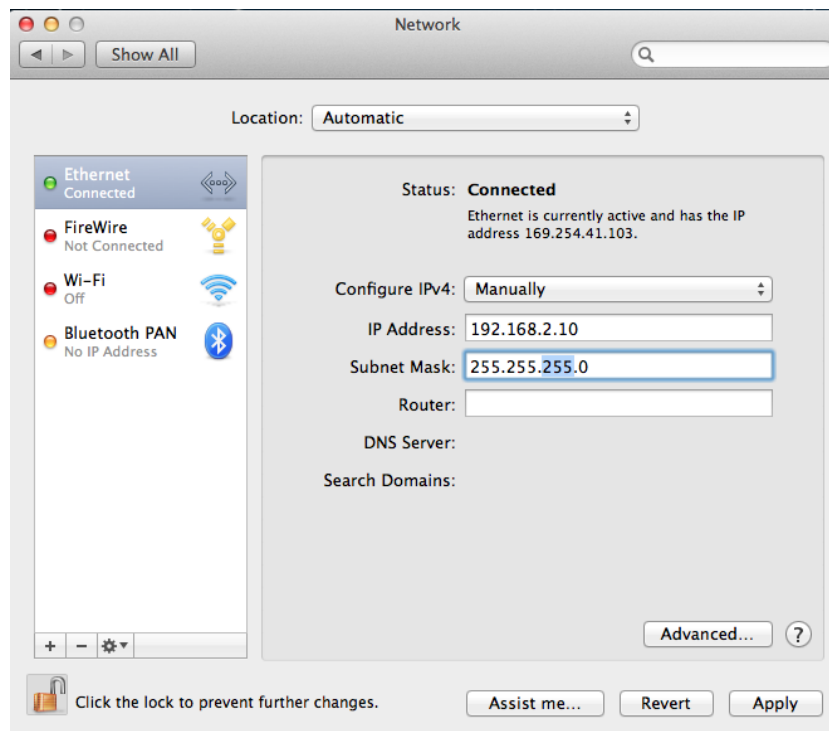


**Note:** The access point uses the default IP address 192.168.2.1, which may not be in the same IP address subnet of your network. Accordingly, you need to modify the IP address of your Macintosh to 192.168.2.10, as shown in the next step.

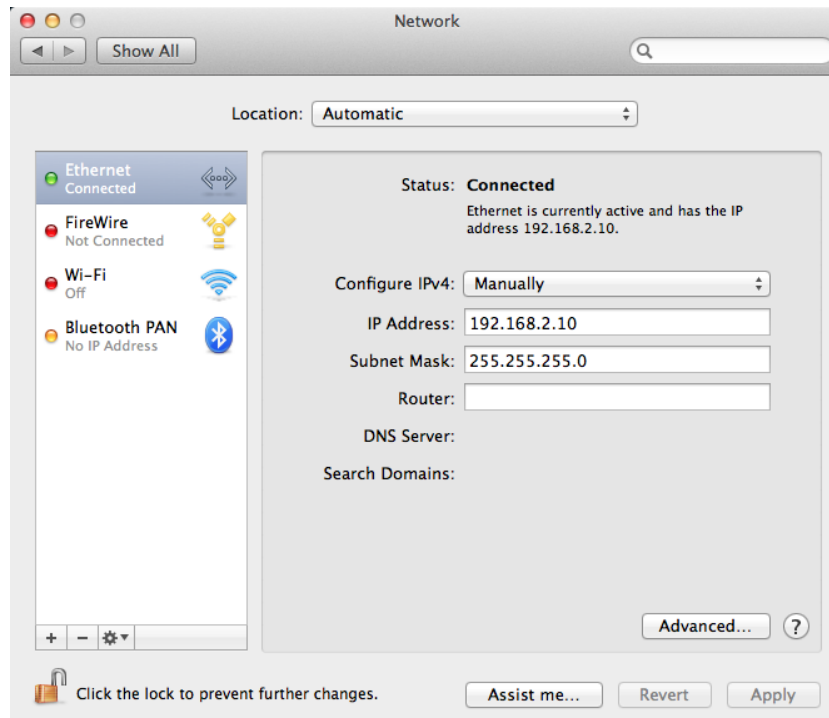


**Note:** Please refer to the user manual for guidance on how to assign a new IP address to the **access point**. If the default IP remains unchanged, you will need to repeat this process and modify the IP of your **Macintosh** every time you wish to configure the access point.

8. In the panel on the right side, enter IP address 192.168.2.10 and subnet mask 255.255.255.0. Click on “Apply”.



9. In the left sidebar, “Ethernet” should now display “Connected” as shown below. In the right panel, you should see the IP address 192.168.2.10 and subnet mask 255.255.255.0.

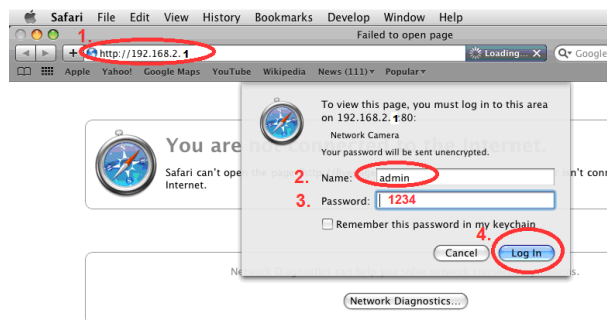


10. Open your internet browser and enter <http://192.168.2.1> in the address box. In the pop up window, enter the following username and password:

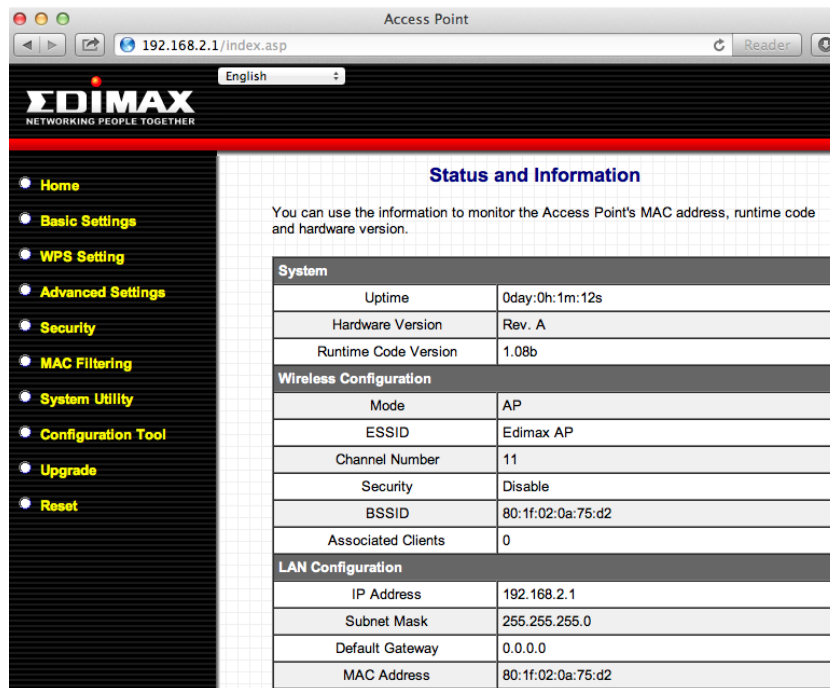
Username: admin

Password: 1234

Click “Log In”.

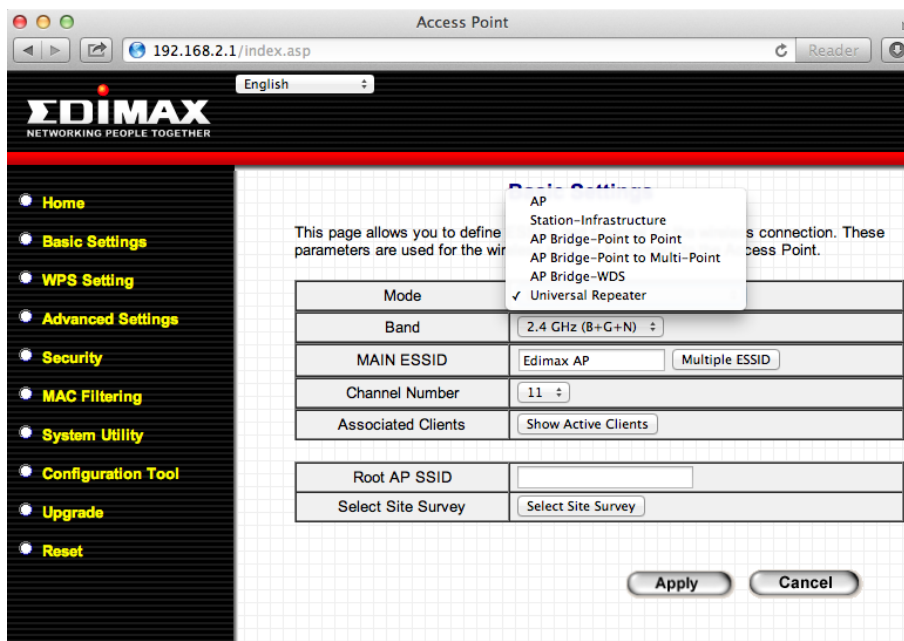


11. This will open the access point’s web management interface, which allows you to configure the functions and settings of the access point. Please refer to the user manual for more information about configuration; the following is an example of how to set the access point to “Universal Repeater” mode.



## Universal Repeater Mode

- On the "Status and Information" page, click "Basic Setting" in the left menu. Then click the arrow to open the menu labeled "Mode". Select "Universal Repeater" mode.



Click the "Select Site Survey" button. You will see a list of available Wi-Fi networks, as shown below. Choose your Wi-Fi network and click on "Done". If your Wi-Fi network is not shown, "Refresh" the list of available networks, then "select" your Wi-Fi network.



**Note:** Make a note of the “Encryption” listed for your Wi-Fi network, as you will need it later in this procedure, during **Step 4**. In this example, “Encryption” is “WPA2-PSK”.

Click “Done” to close this window.

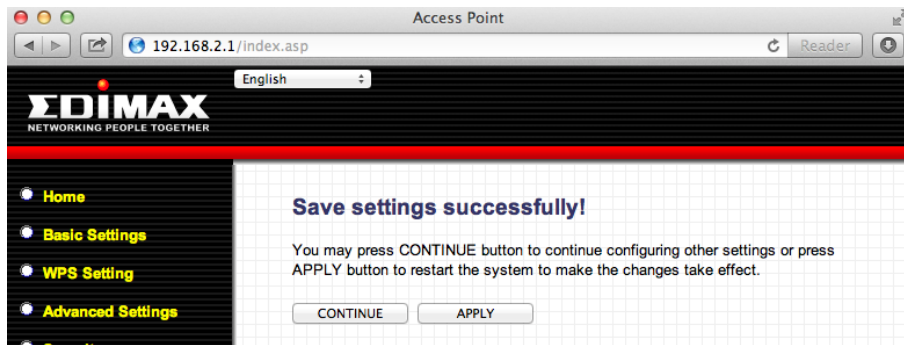
Select	SSID	BSSID	Band	Channel	Type	Encryption	Signal
<input checked="" type="radio"/>	HomeNetwork	00:1f:1f:ed:e3:8a	(B+G+N)	6	AP	WPA2-PSK	80
<input type="radio"/>	EdimaxCorp	80:1f:02:21:0f:dc	(B+G+N)	11	AP	WPA2-PSK	56
<input type="radio"/>	EdimaxDSL2	00:1f:1f:de:39:aa	(B+G+N)	6	AP	WPA2-PSK	52
<input type="radio"/>	kpk1503	00:21:91:0d:99:5b	(B+G+N)	7	AP	WPA2-PSK	48

- The “Root AP SSID” is your main Wi-Fi router. The “MAIN ESSID” is the SSID of the repeater. Click the box labeled “MAIN ESSID” and enter a name for reference. In the example below we used the name “repeater”. Different SSIDs ensure that you can easily differentiate between devices. Click on “Apply”.

Mode	Universal Repeater
Band	2.4 GHz (B+G+N)
MAIN ESSID	repeater
Channel Number	6
Associated Clients	Show Active Clients
Root AP SSID	HomeNetwork
Select Site Survey	Select Site Survey

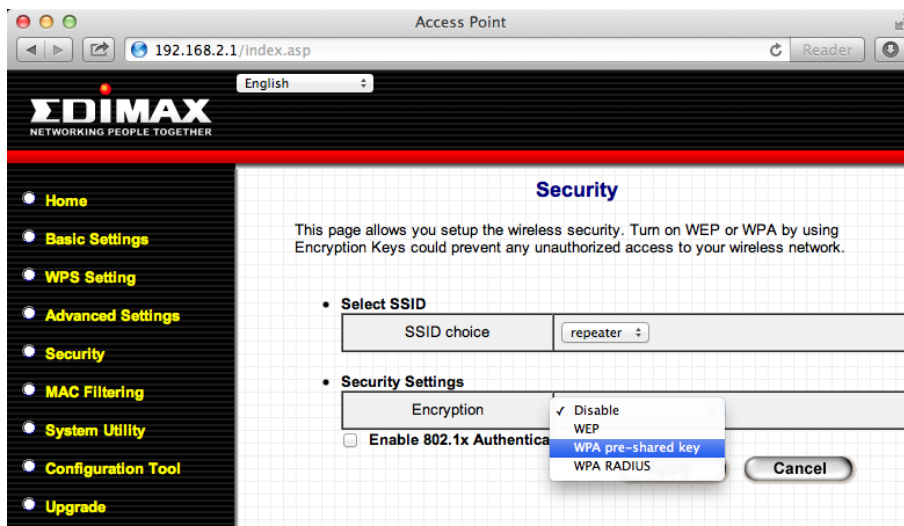
- You will see a screen which displays “Save settings successfully!” Choose “Continue”.





**Note:** Please do not choose “Apply” at this point. It is necessary to continue and configure the security settings of the access point before it can function.

4. Select “Security” from the left sidebar in the Edimax web management interface. This will take you to the screen shown below. Under the heading “Security Settings”, open the menu labeled “Encryption”. Select the appropriate type of encryption, based on the security settings in your existing Wi-Fi network, as displayed in **Step 1**. In this example, we select “WPA pre-shared key”.



**Note:** You need to select the same encryption as your existing Wi-Fi network, otherwise this repeater mode cannot connect to it.

5. Then you need to enter your existing network security settings.

For “WPA pre-shared key” encryption, as shown in the next screenshot, select “WPA2(AES)” in the field marked “WPA Unicast Cipher Suite”. Underneath, open the menu labeled “Pre-shared Key Format”, and choose “Passphrase”. Finally enter your existing wireless network password into the field labeled “Pre-Shared Key”. For other encryption types, please refer to the user manual for detailed instructions.



**Note:** The access point must use the **same** wireless encryption password as with the root wireless network, i.e. your existing Wi-Fi network.

When this is complete, click “Apply”.

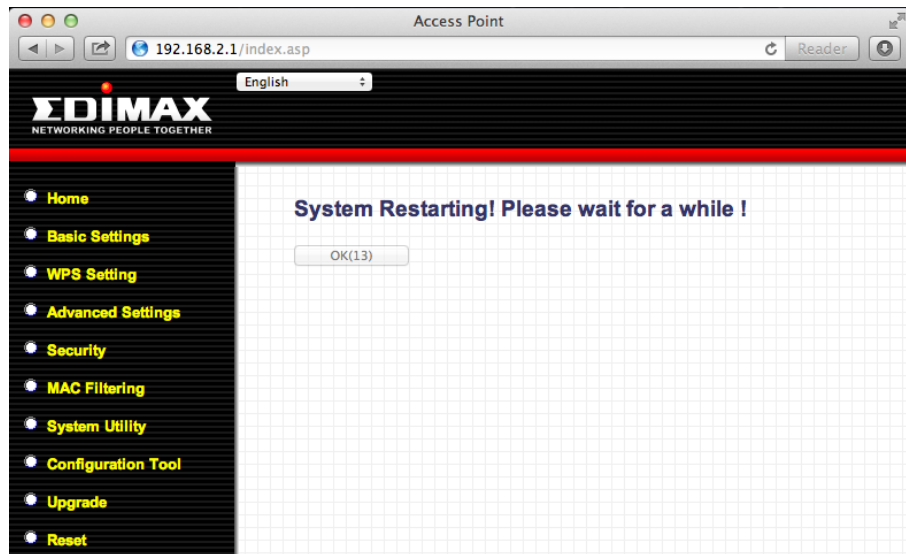
Security	
This page allows you setup the wireless security. Turn on WEP or WPA by using Encryption Keys could prevent any unauthorized access to your wireless network.	
• Select SSID	
SSID choice	repeater
• Security Settings	
Encryption	WPA pre-shared key
WPA Unicast Cipher Suite	<input type="radio"/> WPA(TKIP) <input checked="" type="radio"/> WPA2(AES) <input type="radio"/> WPA2 Mixed
Pre-shared Key Format	Passphrase
Pre-shared Key	*****
<input type="button" value="Apply"/> <input type="button" value="Cancel"/>	

6. You will then see the following screen. Please click “Apply” to restart the system and bring the changes into effect.

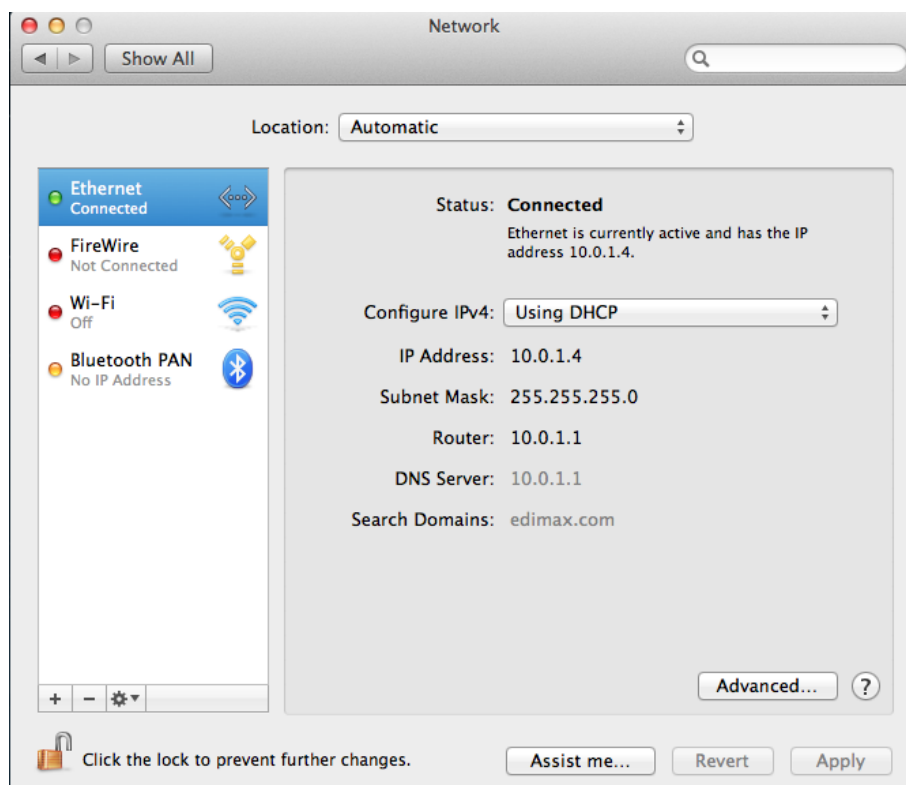
**Save settings successfully!**

You may press CONTINUE button to continue configuring other settings or press APPLY button to restart the system to make the changes take effect.

7. The system will restart. Please wait for it to complete.

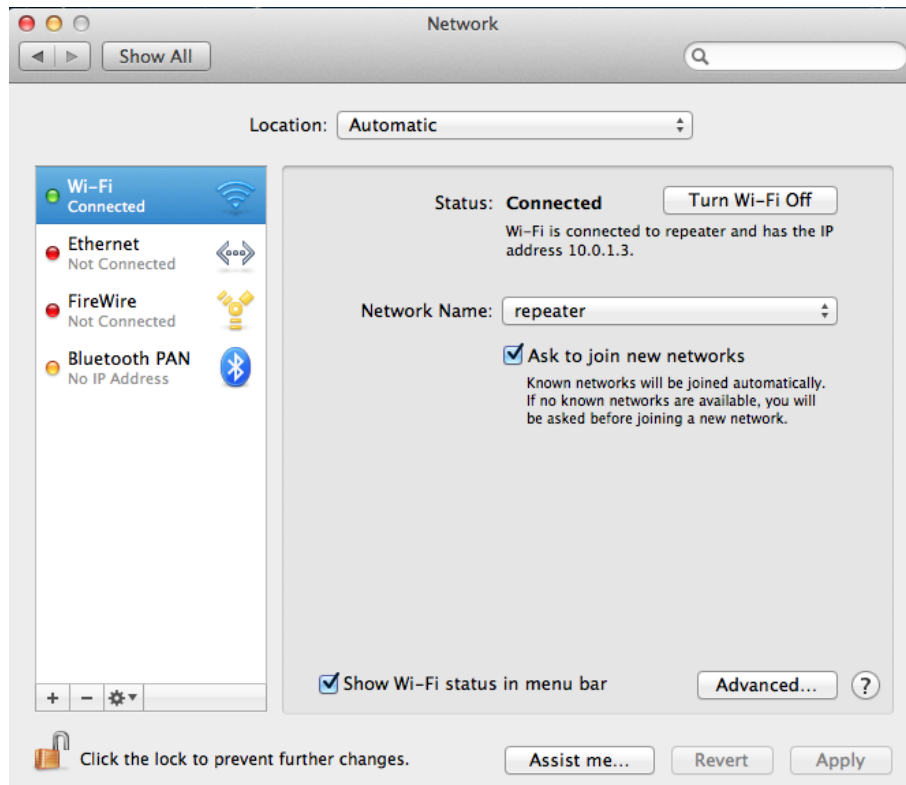


8. Return to your Macintosh's "Network" screen, found under "System Preferences". Click "Ethernet" in the left panel. (Change the settings of Configure IPv4 from Manually to Using DHCP. Click on Apply. The Ethernet adapter will get the IP address from the main wireless network.)



9. Disconnect the access point from your Macintosh by removing the connecting Ethernet cable. The “Ethernet” status in the left sidebar should change to “Not Connected”.

Select “Wi-Fi” in the left sidebar and click the “Turn Wi-Fi On” button in the right panel. Open the “Network Name” menu and choose your access point (Main ESSID) name from the list. In this case, the network was named “repeater”.



The access point should now be fully operational. The “Wi-Fi” status should display “Connected”. Verify your connection by opening a web browser in an appropriate location.



**Note:** Please refer to the attached Quick Installation Guide for guidance on Access Point mode, AP Client mode, and Repeater mode installation.



**Edimax Technology co., Ltd**  
6F., No.3, Wu-Chuan 3rd Road, Wu-Gu,  
New Taipei

**Edimax Technology Europe B.V.**  
Nijverheidsweg 25 5683 CJ Best  
The Netherlands

**Edimax Computer Company**  
3350 Scott Blvd., Bldg.15 Santa Clara,  
CA 95054, USA