

# EN-9320SFP+ EN-9320TX-E

## Snelstartgids

08-2017 / v1.0

### **Edimax Technology Co., Ltd.**

No. 278, Xinhua 1st Rd., Neihu Dist., Taipei City, Taiwan

Email: [support@edimax.com.tw](mailto:support@edimax.com.tw)

---

### **Edimax Technology Europe B.V.**

Fijenhof 2, 5652 AE Eindhoven, The Netherlands

Email: [support@edimax.nl](mailto:support@edimax.nl)

---

### **Edimax Computer Company**

3350 Scott Blvd., Bldg.15 Santa Clara, CA 95054, USA

Live Tech Support: 1(800) 652-6776

Email: [support@edimax.com](mailto:support@edimax.com)

<b>I. Productinformatie</b> .....	<b>1</b>
1	
I-1. Inhoud van de verpakking .....	1
I-2. LED-status .....	1
I-3. Systeemvereisten .....	1
<b>II. Hardware-installatie</b> .....	<b>2</b>
<b>III. Setup Wizard</b> .....	<b>3</b>
III-1. Driver-installatie .....	3
III-2. Driver verwijderen .....	8
III-2-1. Windows Vista, 7, 8.1 en 10 .....	8

## **Multi-Language Quick Installation Guide (QIG) on the CD**

**Čeština:** Českého průvodce rychlou instalací naleznete na přiloženém CD s ovladači

**Deutsch:** Finden Sie bitte das deutsche S.A.L. beiliegend in der Treiber CD

**Español:** Incluido en el CD el G.R.I. en Español.

**Français:** Veuillez trouver l'français G.I.R ci-joint dans le CD

**Italiano:** Incluso nel CD il Q.I.G. in Italiano.

**Magyar:** A magyar telepítési útmutató megtalálható a mellékelt CD-n

**Nederlands:** De nederlandse Q.I.G. treft u aan op de bijgesloten CD

**Polski:** Skrócona instrukcja instalacji w języku polskim znajduje się na załączonej płycie CD

**Português:** Incluído no CD o G.I.R. em Portugues

**Русский:** Найдите Q.I.G. на русском языке на приложенном CD

**Türkçe:** Ürün ile beraber gelen CD içinde Türkçe Hızlı Kurulum Kılavuzu'nu bulabilirsiniz

**Українська:** Для швидкого налаштування Вашого пристрою, будь ласка, ознайомтесь з інструкцією на CD

# I. Productinformatie

---

De EN-9320SFP+/EN-9320TX-E is een hoogstaande 10 Gigabit Ethernet PCI-Express adapter voor servers.

## I-1. Inhoud van de verpakking



EN-9320SFP+



EN-9320TX-E

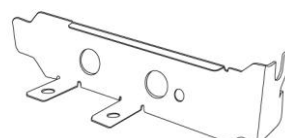
Of



CD-ROM



QIG



PCIe steun met laag profiel

## I-2. LED-status

LED	Status	Definitie
SNELHEID	Groen	10 Gbps
	Bruingeel	5 Gbps / 2.5 Gbps / 1 Gbps
	Uit	100 Mbps
LNK/ACT	Groen	Verbinding tot stand gekomen
	Groen knipperend	Activiteit of gegevensoverdracht
	Uit	Geen verbinding

## I-3. Systeemvereisten

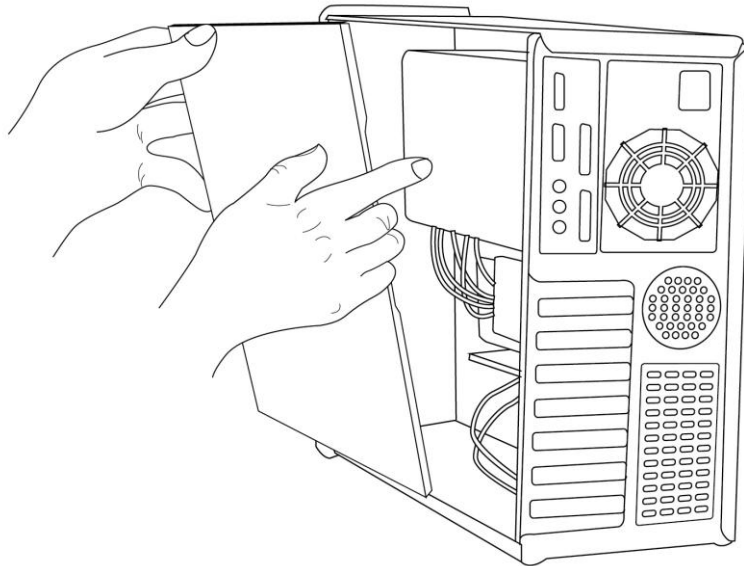
- Windows 7/8/8.1/10, windows Server 2012, 2012 R2, 2008, 2008 R2
- Harde schijf: 100 MB
- CD-rom drive
- Leeg PCI-Express 2.0 slot (x4 of daarboven)
- 10 Gigabit SFP+ zender-ontvanger (niet compatible met 10/100/1000 Mbps SFP zender-ontvangers)

## II. Hardware-installatie

---

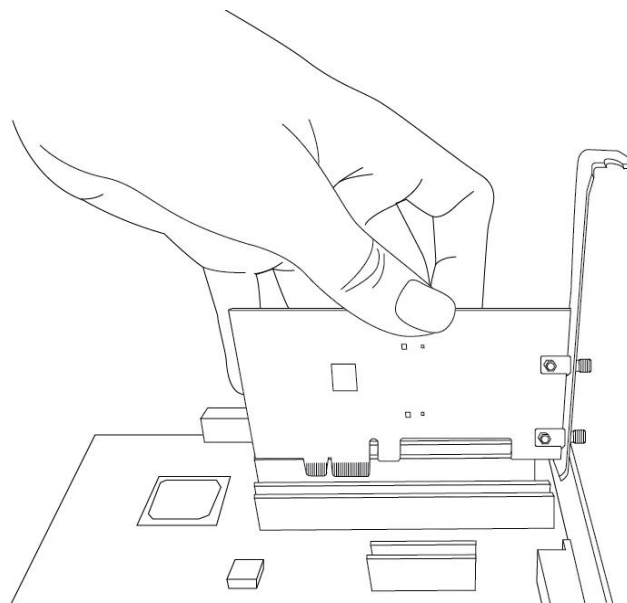
1. Schakel uw computer uit, haal de stekker uit het stopcontact en verwijder de deksel.

 **Kijk in de handleiding van uw computer als u twijfelt over hoe de deksel verwijderd moet worden om een PCIe slot te lokaliseren.**

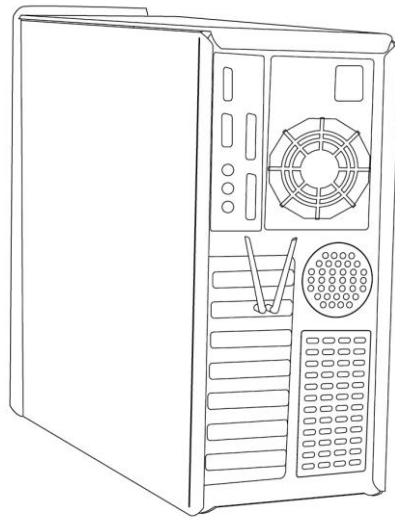


2. Identificeer uw lege PCIe slot en verwijder de bijhorende metalen deksel aan de achterkant van uw computer door deze los te schroeven. Steek de Ethernetkaart in het lege PCIe slot.

 **Een PCIe steun met laag profiel is tevens meegeleverd in de verpakking.**



3. Plaats de kaart door de metalen schroef die u in de vorige stap heeft verwijderd, opnieuw vast te zetten. Plaats de deksel terug op uw computer.

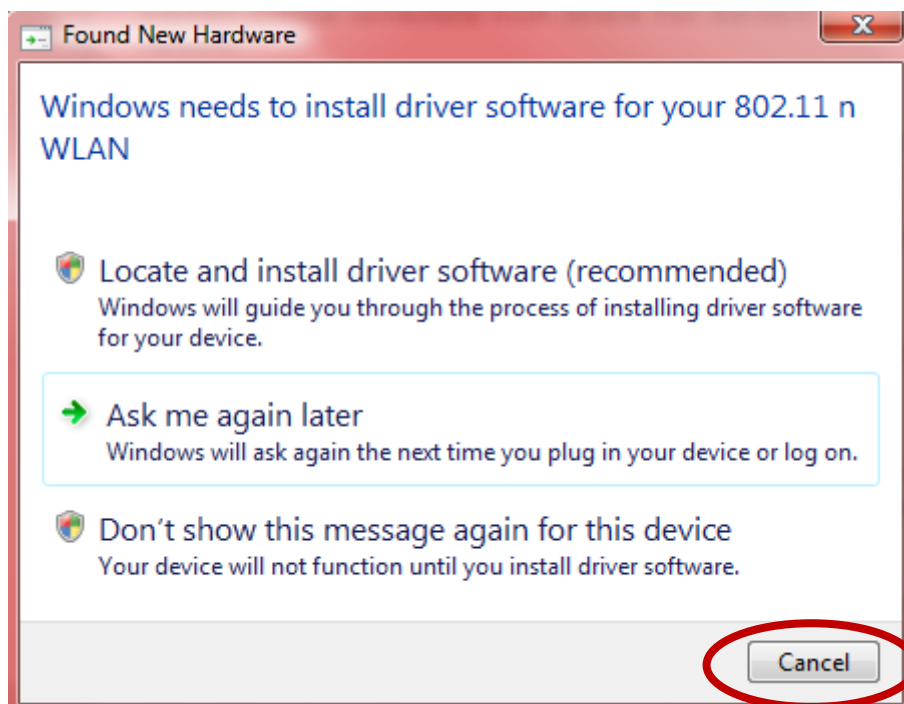


## III. Setup Wizard

---

### III-1. Driver-installatie

1. Zet uw computer aan. Als er een Windows “nieuwe hardware gevonden” wizard opent, sluit dit dan.



2. Plaats de meegeleverde CD-rom in de CD drive van uw computer.

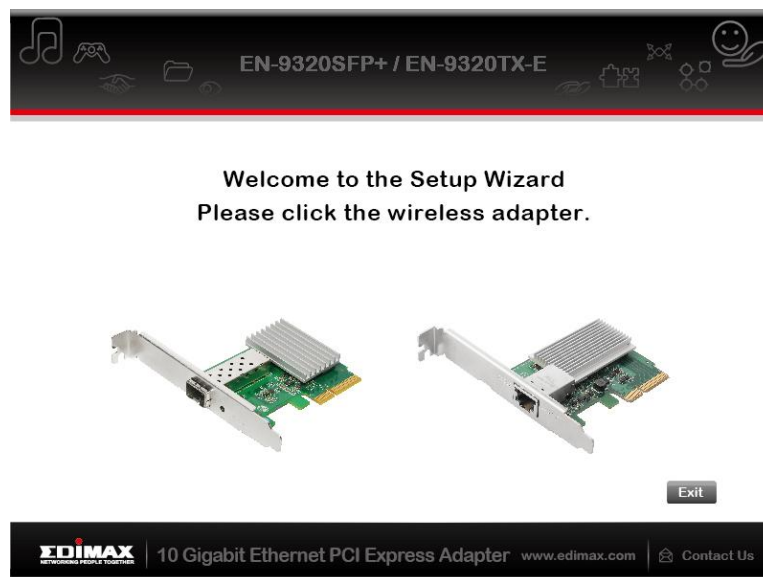


**De setup wizard is tevens beschikbaar als download op de Edimax website.**

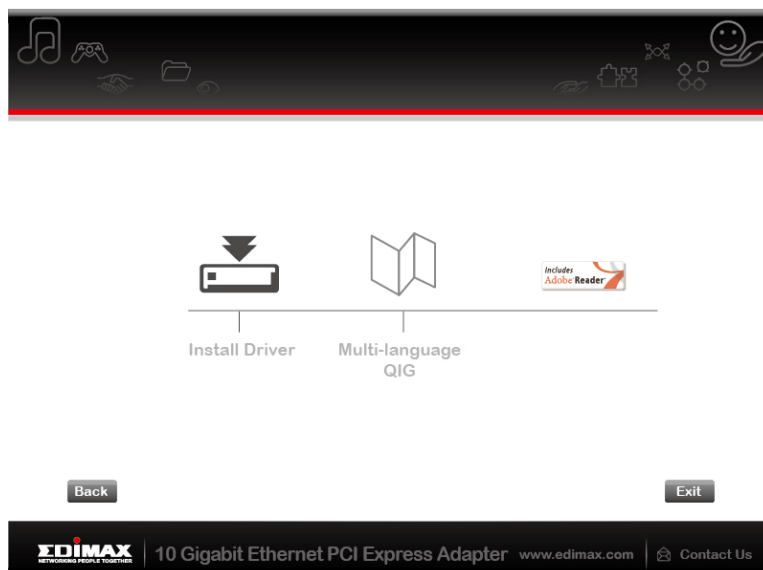
3. De setup wizard opent zoals hieronder weergegeven. Klik op de draadloze PCIe adapter om verder te gaan.



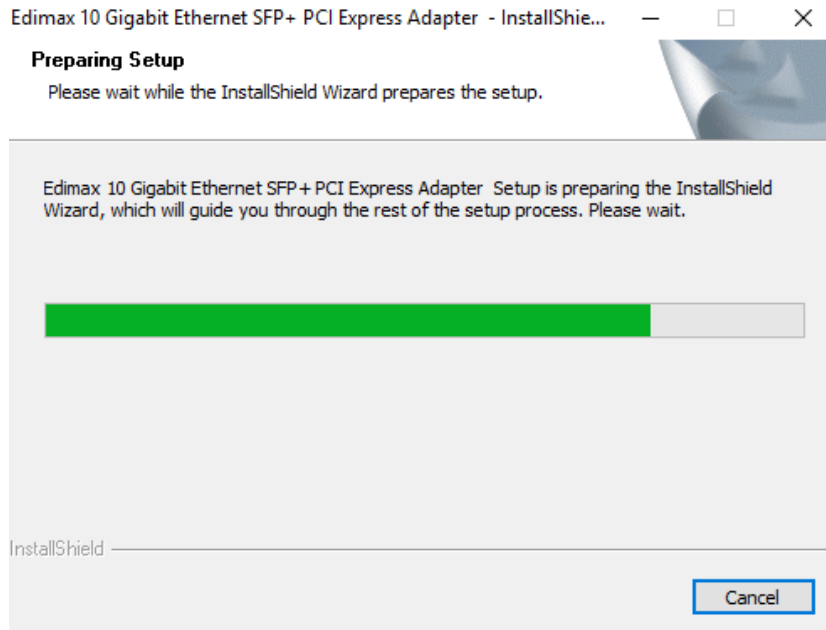
**Als de CD niet automatisch start of als u de setup wizard hebt gedownload, browse dan a.u.b. naar de "Autorun" map op de CD.**



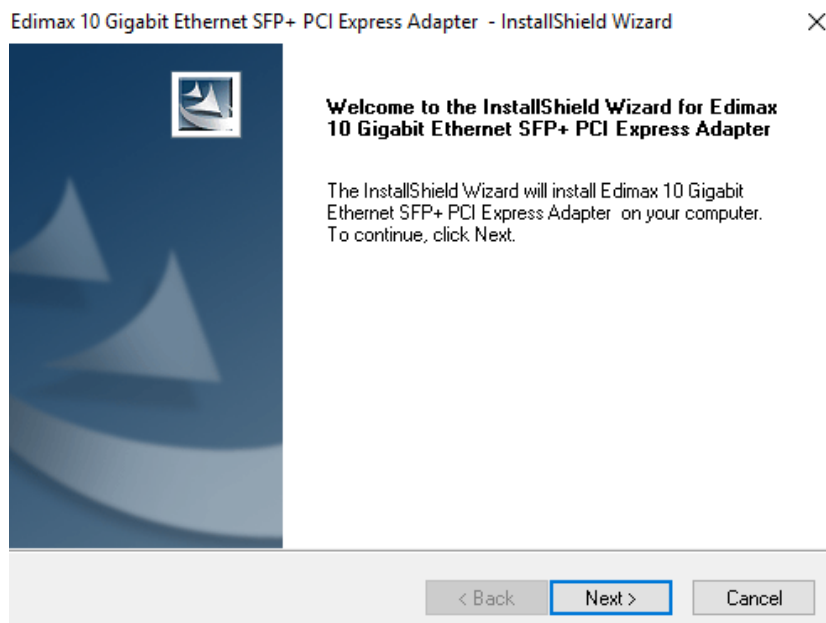
4. Klik op "Installeer driver" om door te gaan met het installeren van de drivers voor uw EN-9320SFP+/EN-9320TX-E.



## 5. Wacht a.u.b. tot de Wizard zich gereed maakt voor installatie.

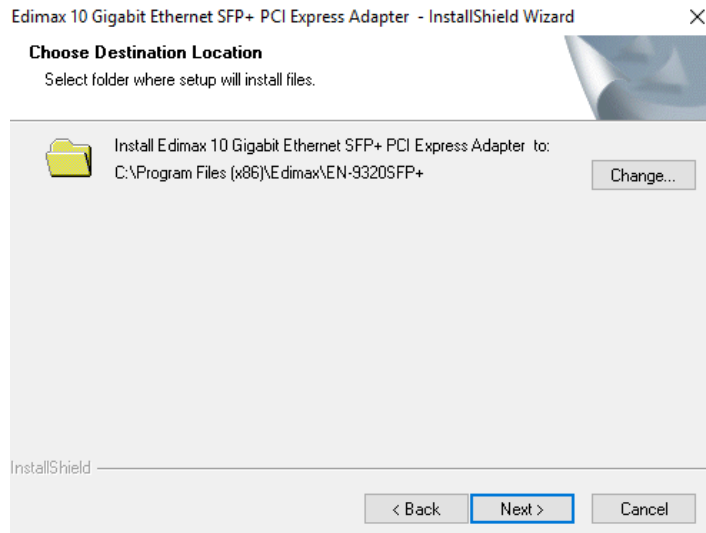


## 6. Klik op "Volgende" om de driver te installeren.

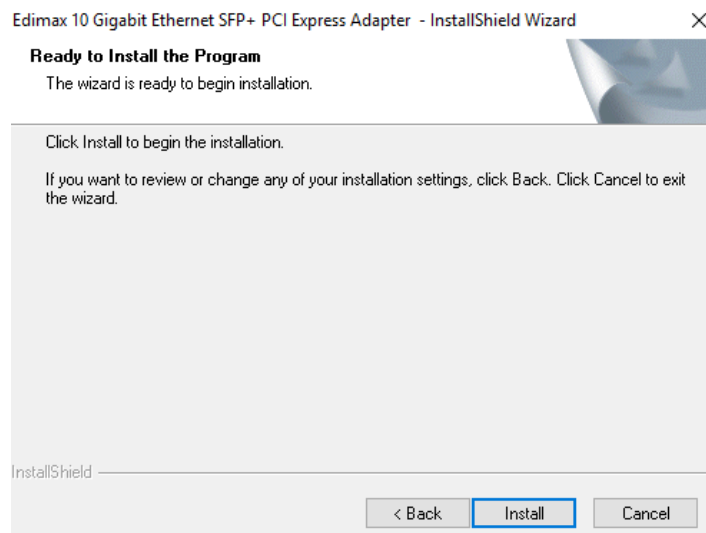


## 7. Selecteer de map waar de setup de bestanden moet installeren. Klik op "Volgende" om te bevestigen.

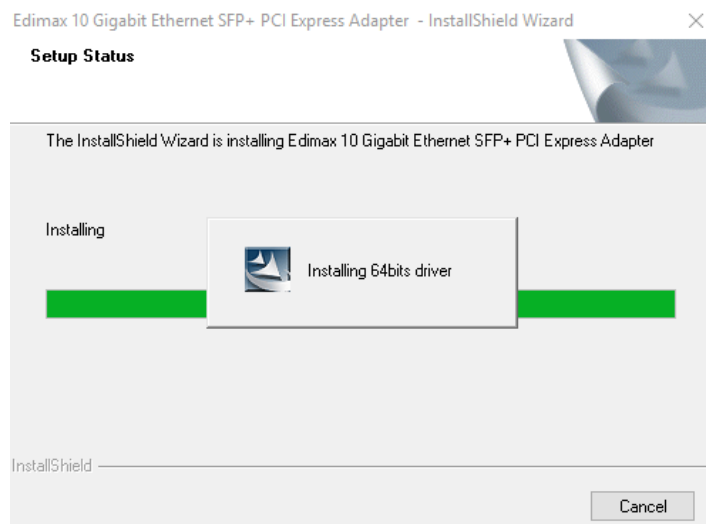




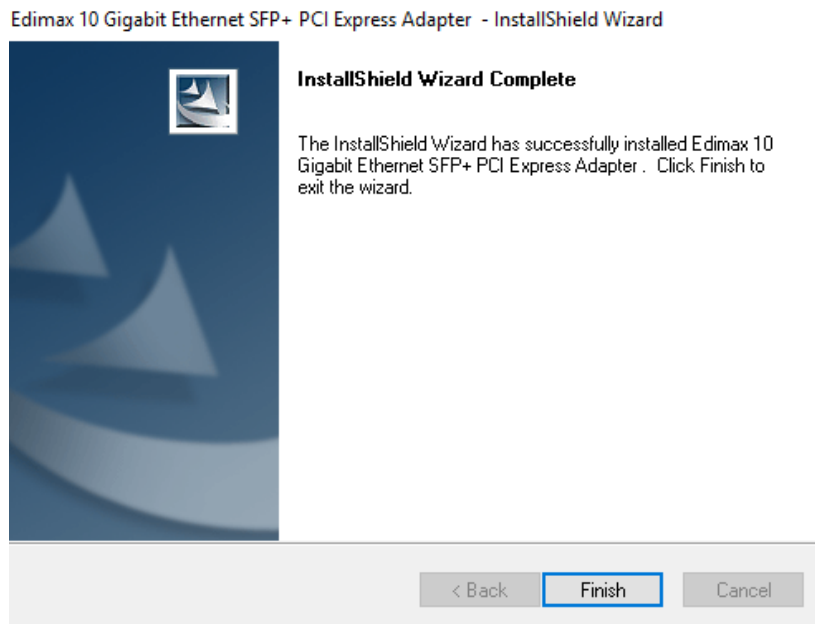
**8.** Klik op “Installeren” om de installatie te starten.



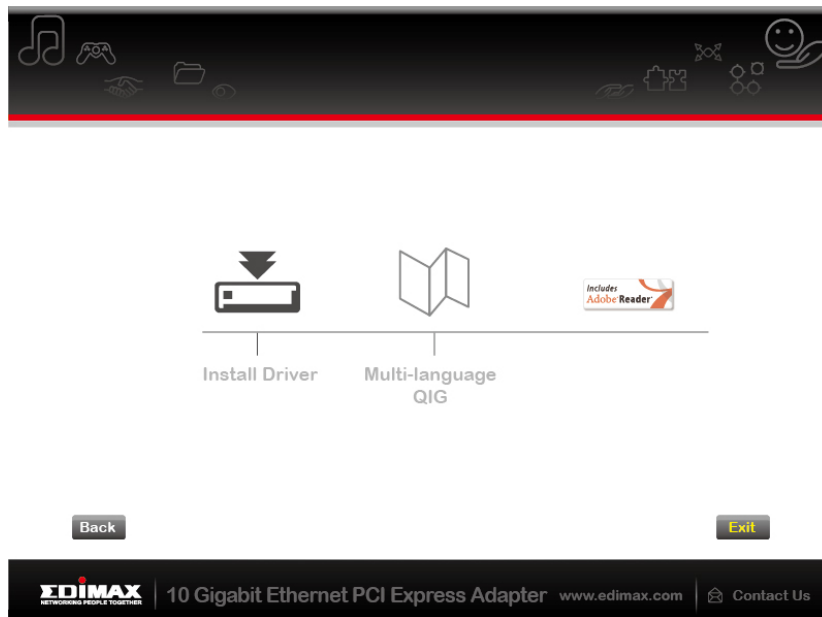
**9.** Wacht a.u.b. terwijl de installatieprocedure uitgevoerd wordt.



**10.** Als de installatie compleet is, klik dan op "Voltooien".



**11.** Klik op "Afsluiten" om de set-up wizard af te sluiten.



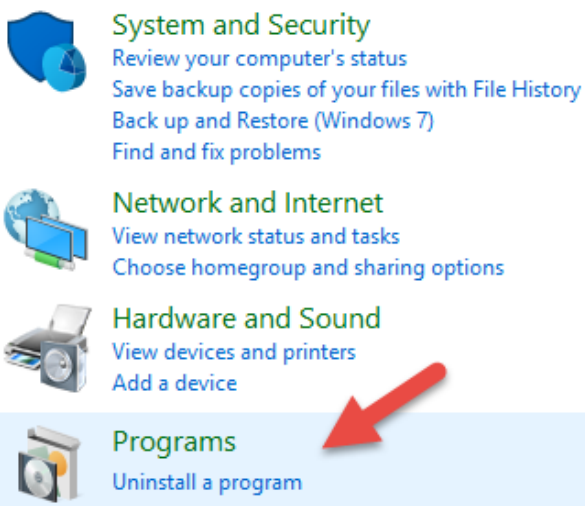
***De meertalige QIG wordt meegeleverd op de CD-rom. Om deze te openen klik op "Meertalige QIG".***

## III-2. Driver verwijderen

### III-2-1. Windows Vista, 7, 8.1 en 10

1. Open het configuratiescherm via het Startmenu of Zoekfunctie.
2. Selecteer **programma verwijderen** bij de **Programma** categorie.

Adjust your computer's settings

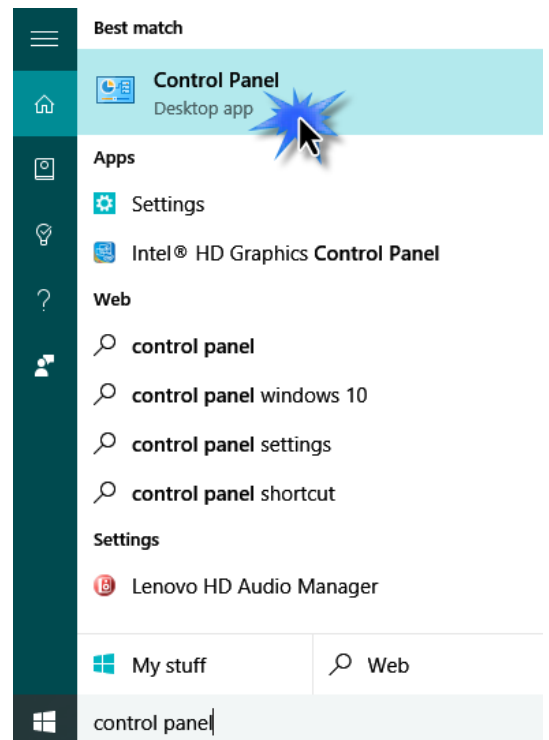


**System and Security**  
Review your computer's status  
Save backup copies of your files with File History  
Back up and Restore (Windows 7)  
Find and fix problems

**Network and Internet**  
View network status and tasks  
Choose homegroup and sharing options

**Hardware and Sound**  
View devices and printers  
Add a device

**Programs**  
Uninstall a program



Best match

- Control Panel  
Desktop app

Apps

- Settings
- Intel® HD Graphics Control Panel

Web

- control panel
- control panel windows 10
- control panel settings
- control panel shortcut

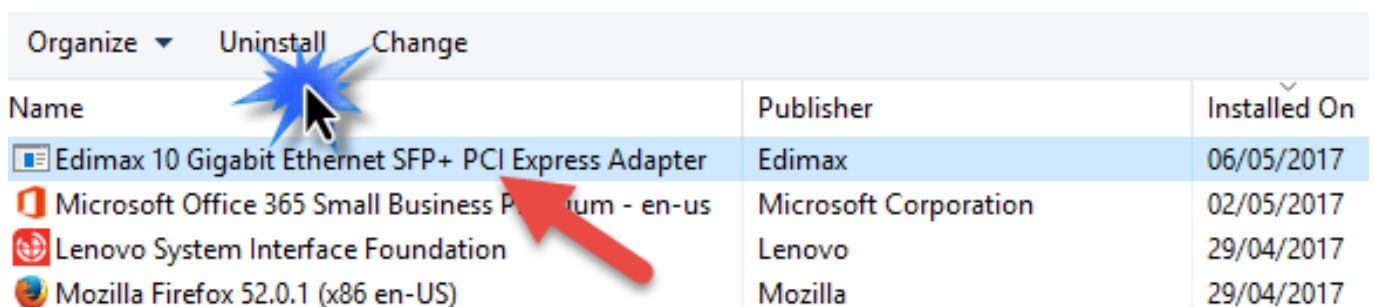
Settings

- Lenovo HD Audio Manager

My stuff    Web

control panel

3. Selecteer **Edimax** (of vergelijkbaar) en klik op **Uninstall**.



Name	Publisher	Installed On
Edimax 10 Gigabit Ethernet SFP+ PCI Express Adapter	Edimax	06/05/2017
Microsoft Office 365 Small Business Professional - en-us	Microsoft Corporation	02/05/2017
Lenovo System Interface Foundation	Lenovo	29/04/2017
Mozilla Firefox 52.0.1 (x86 en-US)	Mozilla	29/04/2017

## **COPYRIGHT**

Copyright © Edimax Technology Co., Ltd. all rights reserved. No part of this publication may be reproduced, transmitted, transcribed, stored in a retrieval system, or translated into any language or computer language, in any form or by any means, electronic, mechanical, magnetic, optical, chemical, manual or otherwise, without the prior written permission from Edimax Technology Co., Ltd.

Edimax Technology Co., Ltd. makes no representations or warranties, either expressed or implied, with respect to the contents hereof and specifically disclaims any warranties, merchantability, or fitness for any particular purpose. Any software described in this manual is sold or licensed as is. Should the programs prove defective following their purchase, the buyer (and not this company, its distributor, or its dealer) assumes the entire cost of all necessary servicing, repair, and any incidental or consequential damages resulting from any defect in the software. Edimax Technology Co., Ltd. reserves the right to revise this publication and to make changes from time to time in the contents hereof without the obligation to notify any person of such revision or changes.

The product you have purchased and the setup screen may appear slightly different from those shown in this QIG. The software and specifications are subject to change without notice. Please visit our website [www.edimax.com](http://www.edimax.com) for updates. All brand and product names mentioned in this manual are trademarks and/or registered trademarks of their respective holders.

## **Federal Communication Commission Interference Statement**

This equipment has been tested and found to comply with the limits for a Class B digital device, pursuant to Part 15 of the FCC Rules. These limits are designed to provide reasonable protection against harmful interference in a residential installation. This equipment generates, uses and can radiate radio frequency energy and, if not installed and used in accordance with the instructions, may cause harmful interference to radio communications. However, there is no guarantee that interference will not occur in a particular installation. If this equipment does cause harmful interference to radio or television reception, which can be determined by turning the equipment off and on, the user is encouraged to try to correct the interference by one or more of the following measures:

- Reorient or relocate the receiving antenna.
- Increase the separation between the equipment and receiver.
- Connect the equipment into an outlet on a circuit different from that to which the receiver is connected.
- Consult the dealer or an experienced radio/TV technician for help.

FCC Caution: Any changes or modifications not expressly approved by the party responsible for compliance could void the user's authority to operate this equipment.

This device complies with Part 15 of the FCC Rules. Operation is subject to the following two conditions: (1) This device may not cause harmful interference, and (2) this device must accept any interference received, including interference that may cause undesired operation.

This device and its antenna(s) must not be co-located or operating in conjunction with any other antenna or transmitter.

## EU Declaration of Conformity

- English:** This equipment is in compliance with the essential requirements and other relevant provisions of Directive 2014/30/EU.
- Français:** Cet équipement est conforme aux exigences essentielles et autres dispositions de la directive 2014/30/EU.
- Čeština:** Toto zařízení je v souladu se základními požadavky a ostatními příslušnými ustanoveními směrnice 2014/30/EU.
- Polski:** Urządzenie jest zgodne z ogólnymi wymaganiami oraz szczególnymi warunkami określonymi Dyrektywą UE 2014/30/EU.
- Română:** Acest echipament este în conformitate cu cerințele esențiale și alte prevederi relevante ale Directivei 2014/30/EU.
- Русский:** Это оборудование соответствует основным требованиям и положениям Директивы 2014/30/EU.
- Magyar:** Ez a berendezés megfelel az alapvető követelményeknek és más vonatkozó irányelveknek (2014/30/EU).
- Türkçe:** Bu cihaz 2014/30/EU. direktifleri zorunlu istekler ve diğer hükümlerle ile uyumludur.
- Українська:** Обладнання відповідає вимогам і умовам директиви 2014/30/EU.
- Slovenčina:** Toto zariadenie spĺňa základné požiadavky a ďalšie príslušné ustanovenia smerníc 2014/30/EU.
- Deutsch:** Dieses Gerät erfüllt die Voraussetzungen gemäß den Richtlinien 2014/30/EU.
- Español:** El presente equipo cumple los requisitos esenciales de la Directiva 2014/30/EU.
- Italiano:** Questo apparecchio è conforme ai requisiti essenziali e alle altre disposizioni applicabili della Direttiva 2014/30/EU.
- Nederlands:** Dit apparaat voldoet aan de essentiële eisen en andere van toepassing zijnde bepalingen van richtlijn 2014/30/EU.
- Português:** Este equipamento cumpre os requisitos essenciais da Directiva 2014/30/EU.
- Norsk:** Dette utstyret er i samsvar med de viktigste kravene og andre relevante regler i Direktiv 2014/30/EU.
- Svenska:** Denna utrustning är i överensstämmelse med de väsentliga kraven och övriga relevanta bestämmelser i direktiv 2014/30/EU.
- Dansk:** Dette udstyr er i overensstemmelse med de væsentligste krav og andre relevante forordninger i direktiv 2014/30/EU.
- suomen kieli:** Tämä laite täyttää direktiivien 2014/30/EU. oleelliset vaatimukset ja muut asiaankuuluvat määräykset.

FOR USE IN             
              
         



### WEEE Directive & Product Disposal



At the end of its serviceable life, this product should not be treated as household or general waste. It should be handed over to the applicable collection point for the recycling of electrical and electronic equipment, or returned to the supplier for disposal.

## Declaration of Conformity

We, Edimax Technology Co., Ltd., declare under our sole responsibility, that the equipment described below complies with the requirements of the European R&TTE directives.

**Equipment: 10GbE SFP+ / 10GbE Network Adapter Card**

**Model No.: EN-9320SFP+ / EN-9320TX-E**

The following European standards for essential requirements have been followed:

### Directives 2014/30/EU

EN 55032:2012/AC:2013 Class B

EN 61000-3-2:2014

EN 61000-3-3:2013

EN 55024:2010

EN 61000-4-2:2009 (ESD)

EN 61000-4-3:2006/A1:2008/A2:2010 (RS)

EN 61000-4-4:2012 (EFT)

EN 61000-4-5:2014 (Surge)

EN 61000-4-6:2014 (CS)

EN 61000-4-8:2010 (PFMF)

EN 61000-4-11:2004 (DIP)

Edimax Technology Europe B.V.

Fijenhof 2,

5652 AE Eindhoven,

The Netherlands

**Signature:**

Printed Name: Vivian Ma

Title: Director

Edimax Technology Europe B.V.

a company of :

Edimax Technology Co., Ltd.

No. 278, Xinhua 1st Rd., Neihu

Dist., Taipei City, Taiwan



Date of Signature: April, 2017

Signature:

A handwritten signature in black ink, appearing to read 'Albert Chang', written over a horizontal line.

Printed Name:

Albert Chang

Title:

Director

Edimax Technology Co., Ltd.



**EDIMAX**  
NETWORKING PEOPLE TOGETHER

The logo features the Greek letter sigma (Σ) as the first letter of 'EDIMAX'. A red dot is positioned above the 'I'. The background of the banner is black and contains various white line-art icons such as a handshake, musical notes, a smiley face, a game controller, and a laptop. A solid purple horizontal bar is located at the bottom of the banner area.