



Philips SensoTouch
Shaving unit

Senso Touch 2D

SensoTouch

RQ11

Keep a close shave

Change heads every 2 years for the best results

Every year your blades travel the height of Mt. Everest... 49 times! After such a workout, even the best materials can lose their edge. Retain your shaver's peak performance — replace heads every 2 years.

Follows the unique contours of your face

- GyroFlex 2D system adjusts easily to the curve

Sensationally smooth shaver

- SensoTouch Shavers with patented Super Lift&Cut Action

An electric shaver that takes care of your skin

- Aquatec seal for comfortable dry shaves and refreshing wet shaves
- Smooth, low-friction SkinGlide to minimise irritation

Simple replacement

- Easy click off, click on

PHILIPS
sense and simplicity

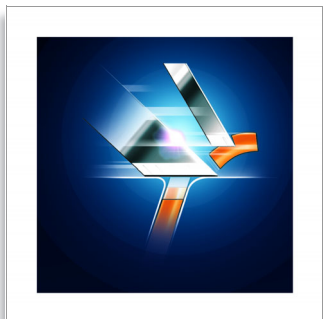
Highlights

GyroFlex 2D



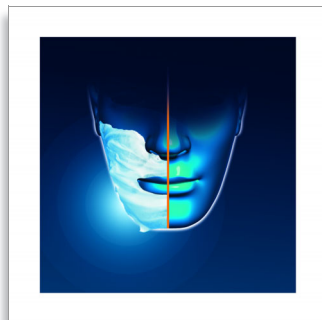
GyroFlex 2D contour-following system adjusts easily to the curves of your face, minimising pressure and irritation for a close shave.

Patented Super Lift&Cut Action



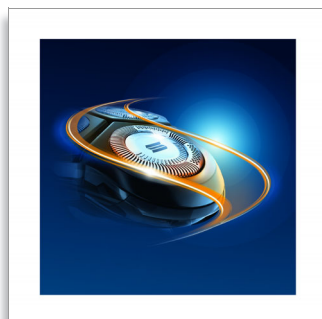
The dual-blade system built into our electric shaver lifts hairs to cut comfortably below skin level for a closer shave.

Aquatec



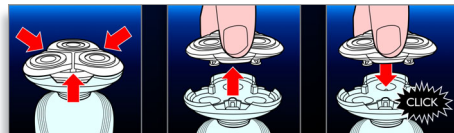
The Aquatec wet and dry seal lets you choose how you prefer to shave. You can get a comfortable dry shave or a refreshing wet shave using a shaving gel or foam for extra skin comfort.

SkinGlide



The low-friction SkinGlide shaving surface slides smoothly along your skin for a close, easy shave.

Easy click off, click on



Easily renew your shaving unit using our click off, click on system.

Specifications

Shaving heads

- Fits product types: RQ1150, RQ1160, RQ1170, RQ1180
- Shaving units per packaging: 1



Issue date 2011-06-27

Version: 3.0.1

© 2011 Koninklijke Philips Electronics N.V.
All Rights reserved.

Specifications are subject to change without notice.
Trademarks are the property of Koninklijke Philips
Electronics N.V. or their respective owners.

www.philips.com