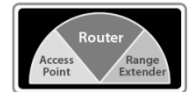




Next Generation Wi-Fi



Dual-Band



3-in-1 Multi-Function



Smart Setup,
No CD Required



Bandwidth Management

BR-6478AC

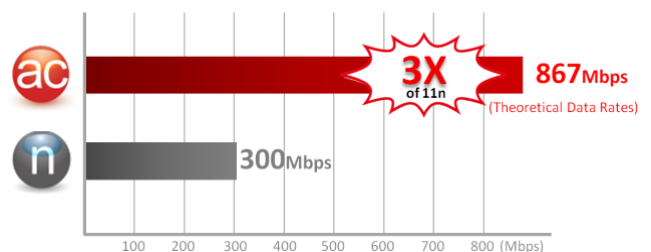
AC1200 Multi-Function Concurrent Dual-Band Wi-Fi Gigabit Router

The extraordinary growth in the number of wireless devices found in modern homes has seen a huge increase in demand for wireless speed, range and bandwidth. This continuing trend away from wired connections to wireless communication and the ever-increasing throughput demands of new Wi-Fi devices and applications—including Internet TVs, computers, tablets and smartphones—drives the requirements in today's homes for high-performance, reliable Wi-Fi to unprecedented levels. To meet the connectivity needs of homes and businesses alike, Edimax has launched the BR-6478AC dual-band 802.11ac router: featuring the latest 11ac draft standard for extraordinary improvements in the speed, reliability and quality of wireless communications.

Next-Generation Wireless Networking

The Edimax BR-6478AC router supports the next generation IEEE 802.11ac wireless standard, meaning higher data rates in the 5GHz band. With 300Mbps speeds in the 2.4GHz band and 867Mbps speeds in 5GHz, the BR-6478AC is ideal for HD video streaming and large file transfers. The router is also backward compatible with 802.11a/b/g/n to ensure compatibility with legacy Wi-Fi devices.

Maximum Speed: Next Generation 802.11ac vs. 802.11n



Concurrent Dual-Band Wi-Fi & Gigabit Ethernet Connectivity

The Edimax BR-6478AC router provides simultaneous 2.4GHz (802.11n) and 5GHz (802.11ac) wireless network connectivity for maximum flexibility of use. Additionally, the BR-6478AC router features four gigabit LAN ports and one gigabit WAN port, offering data rates of up to a staggering 1000Mbps for users with the need for maximum network performance. With gigabit Ethernet connectivity, the BR-6478AC can provide users a fast and smooth media streaming or network gaming experience.

5GHz (Up to 867Mbps)
Interference-Free
HD Video and Gaming

Online Gaming

HD Video Streaming

VoIP Calling

Gigabit
1000
Mbps
10X Faster

100Mbps 1000Mbps

Concurrent Dual-Band

2.4GHz (Up to 300Mbps)
More Supported Devices
Basic Internet Applications

Web Browsing

Online Chat

Email and downloading

AC1200: 867Mbps(5GHz) + 300Mbps(2.4GHz)

AC1200 Multi-Function Concurrent Dual-Band Wi-Fi Gigabit Router

BR-6478AC

3-in-1 Router, Access Point and Range Extender

The BR-6478AC can work as router, access point or range extender. Just configure the mode you need for your network environment using the smart iQ Setup wizard.



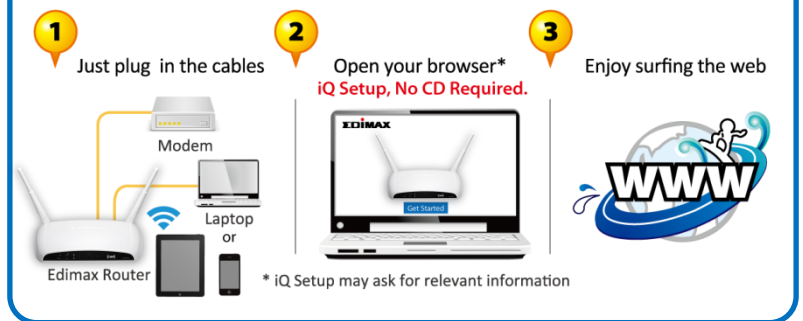
Switch mode using the smart iQ setup wizard on any device with a web browser, no CD required.

**Mobile device setup requires iOS 4.0 or Android 4.0 and above.*

Smart iQ Setup

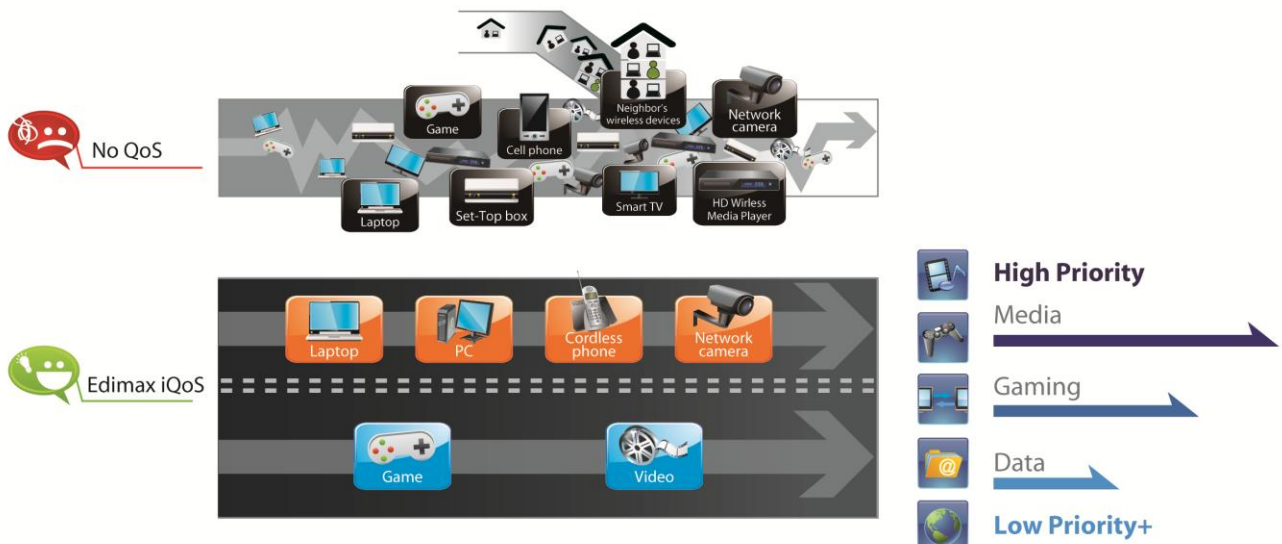
Features iQ Setup for smart, automatic and quick installation with no CD required.

Easy 3-Step Smart iQ Setup



Edimax's Revolutionary iQoS

iQoS is Edimax's solution for a quicker, easier, and more effective way to manage Internet bandwidth. While Quality of Service (QoS) functionality is a common feature in routers across the market, typically only advanced users have the knowledge required to set up the complex parameters. Edimax though has redesigned QoS with user-friendliness and accessibility in mind. A simple and intuitive user interface allows users to arrange bandwidth priority settings in just a few clicks. With iQoS, you can enjoy gaming, video streaming, VoIP applications and BT clients at the same time without the usual nightmare of lag and interruptions. An original, efficient and effective means of managing your Internet bandwidth.



AC1200 Multi-Function Concurrent Dual-Band Wi-Fi Gigabit Router

BR-6478AC

Guest Network*

Supports a guest network to provide connectivity while isolating guests from your primary network.

*Router mode only



WPS (Wi-Fi Protected Setup) Button & Built-In WLAN On/Off Switch

The Edimax BR-6478AC allows users to build secure connections with WPS enabled wireless devices simply by pressing the WPS button - there is no need for the hassle of complex set up and configuration procedures. And with the built-in WLAN on/off switch users can also easily switch on/off the wireless connection without logging into the user interface – an easy way to save electricity when it is not in use.



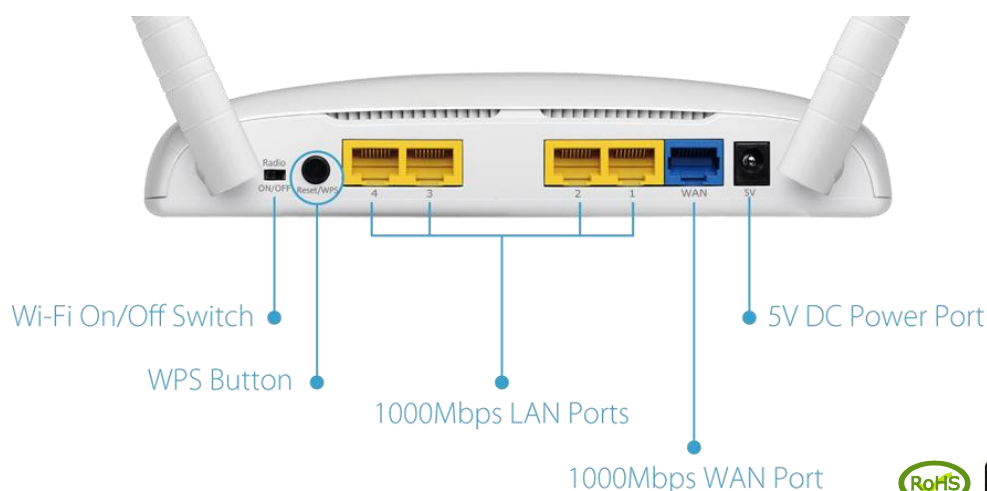
AC1200 Multi-Function Concurrent Dual-Band Wi-Fi Gigabit Router

BR-6478AC

FEATURES & TECHNICAL SPECIFICATIONS

FUNCTIONS	HARDWARE INTERFACE	MANAGEMENT & INSTALLATION
<ul style="list-style-type: none"> Supports router, access point & range extender modes Guest network IGMP proxy and IGMP snooping DDNS and DHCP Port triggering for special applications Virtual server and DMZ hosting MAC/IP filter and URL blocking iQoS for smart bandwidth management Static routing UPnP architecture VPN pass-through (IPSec/PPTP) Wi-Fi schedule control 	<ul style="list-style-type: none"> 1 x RJ-45 gigabit WAN port 4 x RJ-45 gigabit LAN port LED indicators: power, Internet, wireless, WAN LNK/ACT, LAN LNK/ACT 2 x 3dBi dual-band antennas WPS/Reset button Wireless on/off switch 	<ul style="list-style-type: none"> Multi-language user interface Supports remote management System status and security log Firmware upgradable Smart iQ Setup, no CD required Supports smartphone, tablet or laptop setup (iOS 4 or Android 4 and above are required for smartphone or tablet setup).
WAN	OUTPUT POWER & SENSITIVITY GAIN (5GHz)	OUTPUT POWER & SENSITIVITY GAIN (2.4GHz)
<ul style="list-style-type: none"> Supports WISP connection mode Supports RJ-45 cable/xDSL modems WAN protocol: PPPoE, static IP, dynamic IP, PPTP and L2TP 	<p>Output Power</p> <ul style="list-style-type: none"> 11a(54Mbps): $12\pm1.5\text{dBm}$ 11n(20MHz, MCS7): $12\pm1.5\text{dBm}$ 11n(40MHz, MCS7): $12\pm1.5\text{dBm}$ 11n(80MHz, MCS9): $10\pm1.5\text{dBm}$ <p>Receive Sensitivity</p> <ul style="list-style-type: none"> 11a(54Mbps): $-70\pm2\text{dBm}$ 11n(20MHz, MCS7): $-68\pm2\text{dBm}$ 11n(40MHz, MCS7): $-64\pm2\text{dBm}$ 11n(80MHz, MCS9): $-54\pm2\text{dBm}$ 	<p>Output Power</p> <ul style="list-style-type: none"> 11b (11Mbps): $16\pm1.5\text{dBm}$ 11g (54Mbps): $14\pm1.5\text{dBm}$ 11n (20MHz, MCS7): $13\pm1.5\text{dBm}$ 11n (40MHz, MCS7): $13\pm1.5\text{dBm}$ <p>Receive Sensitivity</p> <ul style="list-style-type: none"> 11b(11Mbps): $-84\pm2\text{dBm}$ 11g (54Mbps): $-70\pm2\text{dBm}$ 11n(20MHz, MCS7): $-65\pm2\text{dBm}$ 11n(40MHz, MCS7): $-63\pm2\text{dBm}$
SECURITY	MEMORY	HUMIDITY & TEMPERATURE
<ul style="list-style-type: none"> 64/128-bit WEP, WPA and WPA2 security QoS for critical operations SPI anti-DoS firewall 	<ul style="list-style-type: none"> 4MB NOR Flash 64MB RAM 	<ul style="list-style-type: none"> 10-90% (non-condensing) 0-40°C
POWER ADAPTER	DIMENSIONS & WEIGHTS	CERTIFICATIONS
<ul style="list-style-type: none"> DC 5V, 2A 	<ul style="list-style-type: none"> 196mm x 114mm x 36mm 315g 	<ul style="list-style-type: none"> FCC/CE

HARDWARE INTERFACE



AC1200 Multi-Function Concurrent Dual-Band Gigabit Wi-Fi Router

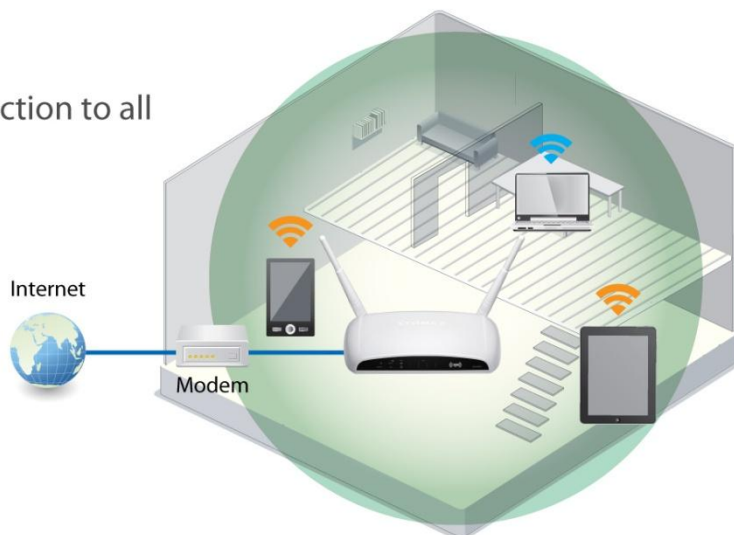
BR-6478AC

APPLICATION DIAGRAM

Router

Share an Internet connection to all of your devices.

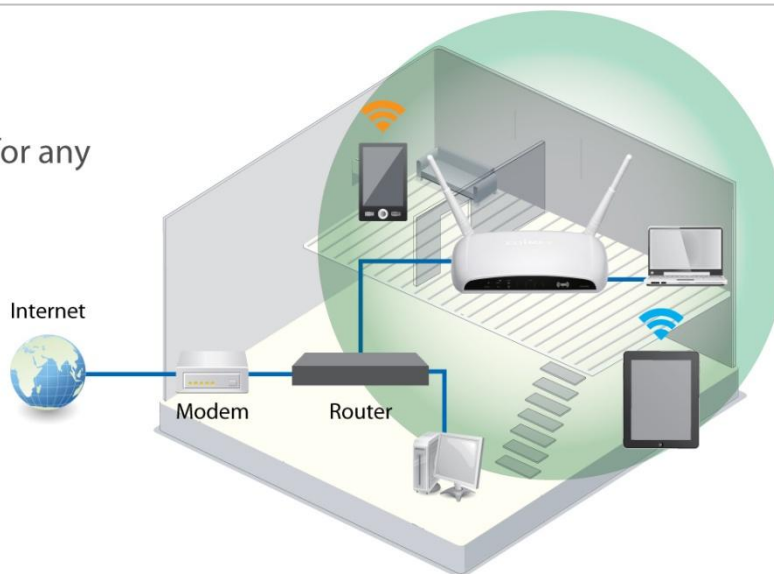
-  5GHz Wi-Fi
-  2.4GHz Wi-Fi



Access Point



Wired and Wi-Fi access for any existing wired network.

-  5GHz Wi-Fi
-  2.4GHz Wi-Fi



Range Extender

Extend existing Wi-Fi for further coverage.

-  5GHz Wi-Fi
-  2.4GHz Wi-Fi
-  Concurrent Dual-Band

