



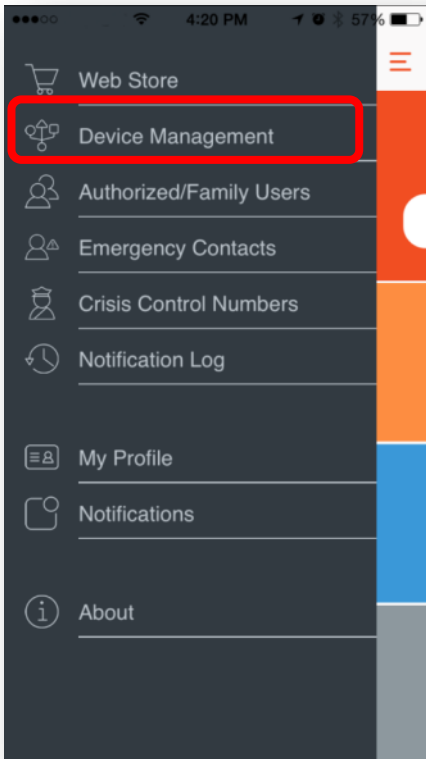
Panic Button (PNB1301)



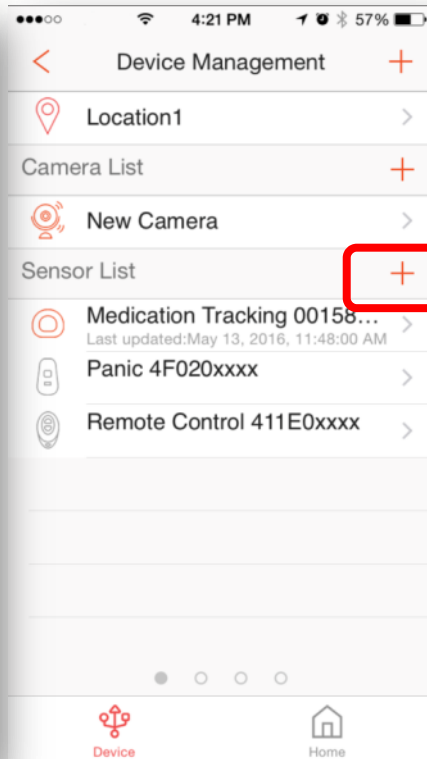
User Manual

Device Activation

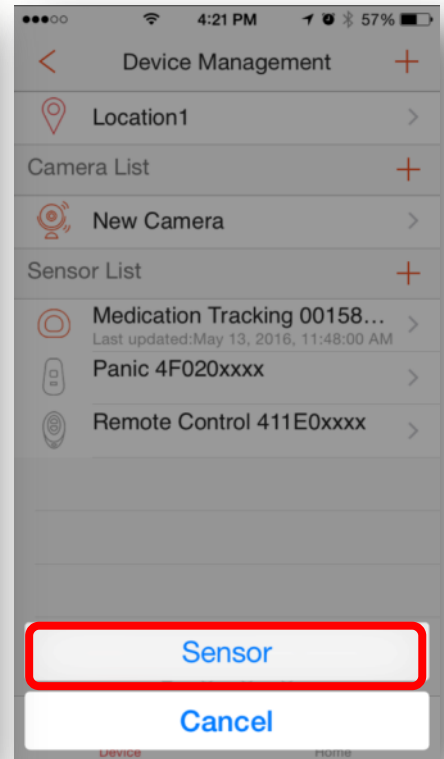
1



2

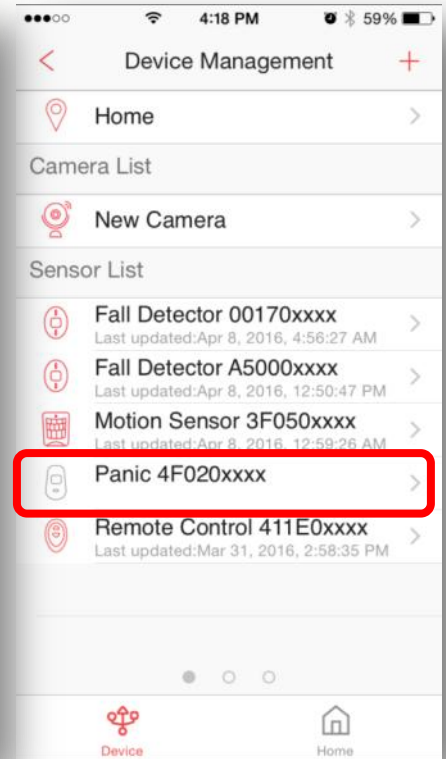


3



In the App sidebar menu, tap “Device Management”, tap “+” next to Sensor List, and then select “Sensor”.

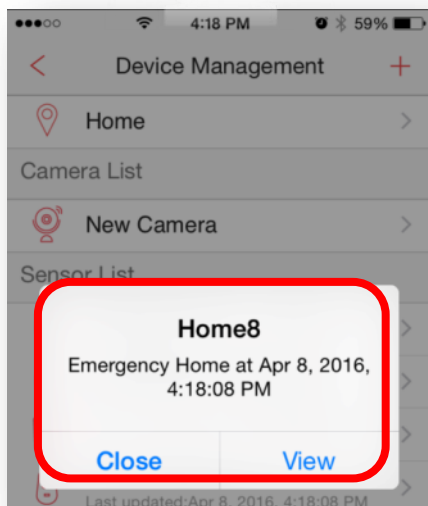
Notice: The device activation steps are only for adding new devices.



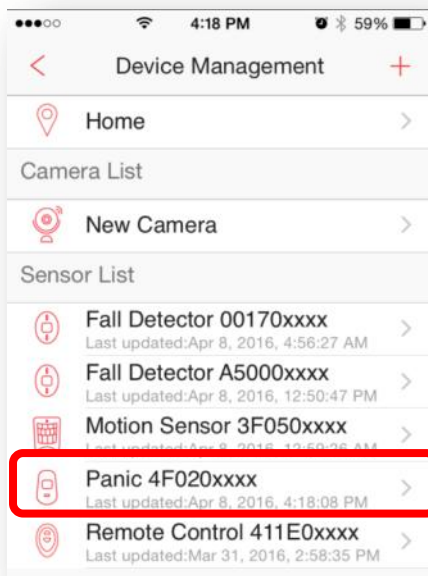
Scan the QR code on the back of the sensor.
Once the Panic Button has been successfully added,
"Panic XXXX has been added successfully" will
appear on the App.
You can find Panic Button icon in your Sensor List
appear in grey color.



To activate, short press the centre button.



The push notification “Emergency” will be received. Close the pop-up window.



The sensor icon will become red and is ready for use.

Function and Notification



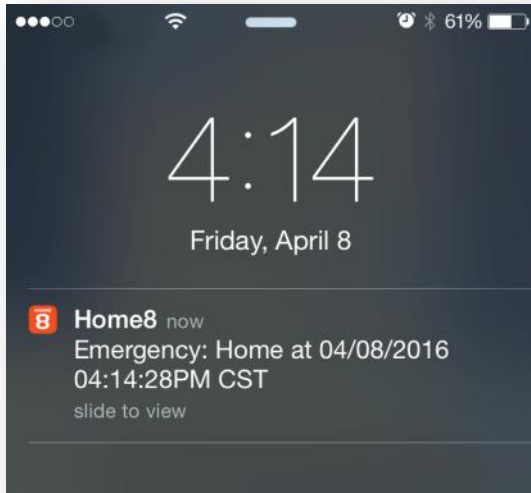
You can wear the Panic Button as pendant to anywhere you go around the house.
Or put the panic button where you can reach it easily like main living areas or near your bed.



Once there is an emergency situation, short press the button, owner and authorized users will get push notification immediately.


Local Siren will be triggered as well.

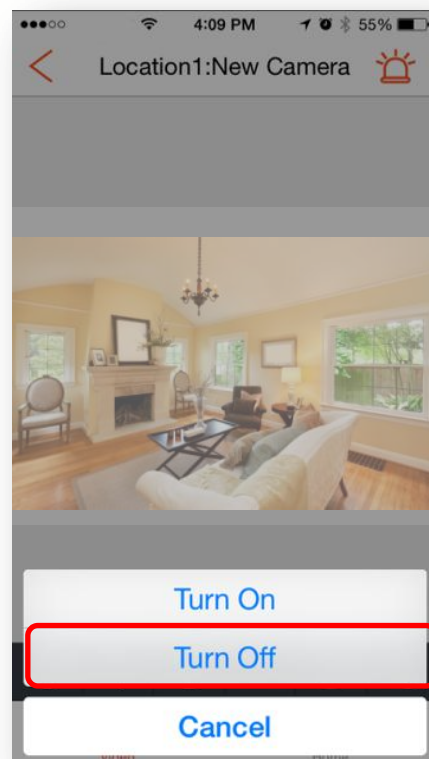
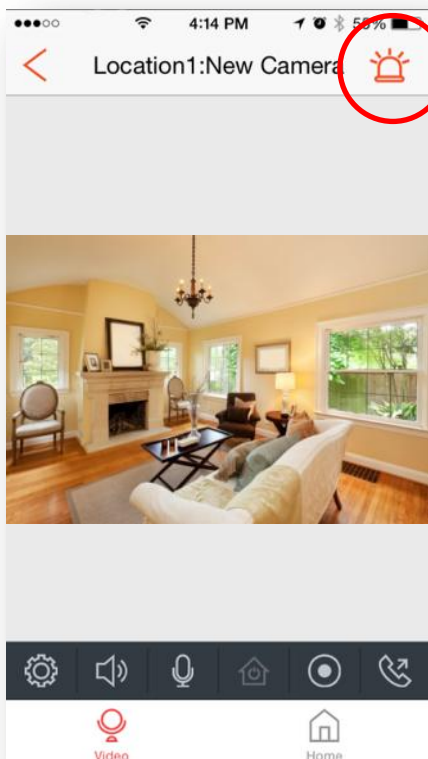
Notification



“Emergency” notification will be sent once someone press the button.

Turn off Local Siren

In view screen, press  icon in upper-right corner, select “Turn Off” to stop the local siren.



Other information

Battery

CR2032 3V Battery.

1 year (Triggered 10 times a day)



Low Battery Alarm

When battery power is low, the "low battery alarm" won't be sent out until when the panic button is pressed, and LED will keep flashing thereafter.

Replace the battery



1. Open the sensor by pushing opposite direction from the place indicate in the picture.

2. Take out the circuit board inside the sensor and push out the battery to replace a new one.



New Battery Checking

In 1 second after a new battery is inserted, the device will send out a signal to intelligent hub for "new battery OK ".

Low Battery Usage Scenario

1.5 year after first activation of the Panic Button, App will issue a forced alert to remind the user to change a new battery.

After a new battery is inserted, the alert should be reset automatically.