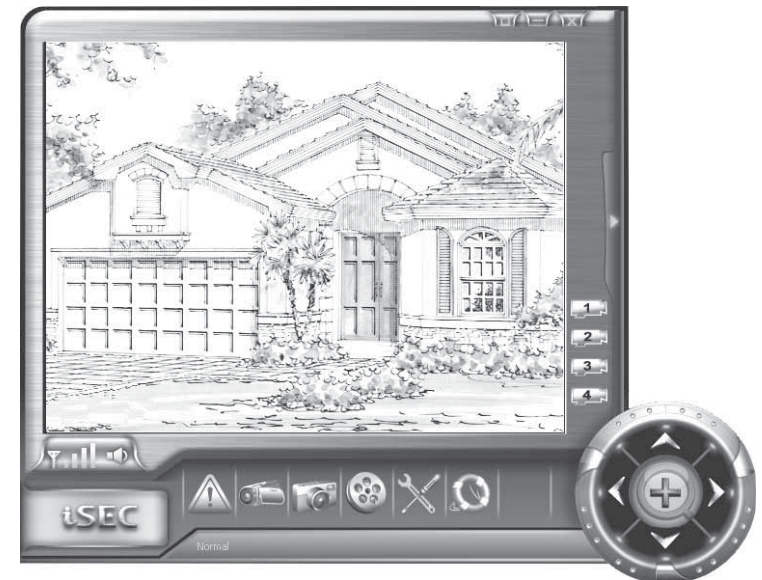


System Requirement

- 1GHz or faster processor
- Microsoft® Windows® XP with Service Pack 2 or 3 or Windows Vista® or Windows 7
- 1GB of RAM recommend for Windows Vista
- 1.0GB of available hard-disk space for recording
- Color monitor with 16-bit color video card
- 1,024x768 monitor resolution at 96dpi or less.
- Microsoft DirectX 9 compatible display driver
- CD-ROM drive
- USB port 1.1 or above
- Digital Wireless Camera and Receiver kit with USB connectivity

[i-SEC Guarding Software Installation Guide]



PLEASE READ CAREFULLY AND SAVE

This manual contains important information about this product's operation. If you are installing this product for others, you must leave this manual -or a copy- with the end user.

Connect device to Computer via USB

Step 1. Install iSEC Guarding software (⚠ Disconnect USB during installation Step 1)

⚠ Installation steps subject to Windows XP; installation steps may slightly differ in Windows Vista

Load the Disk provided into CD-ROM of your PC . After a moment, [SETUP] screen will appear automatically (see below).If the [SETUP] screen does not appear, double-click the CD-ROM icon in [My Computer] to start the installation process manually.



Ⓐ Select the language desired then click [>>]

Ⓑ click[>>]to continue,click [X] to exit



Ⓒ Select the language to use during the installation

Ⓓ Click [Next]



Ⓔ Accept the agreement then click [Next]

Ⓕ Click [Next] for default folder path or click Browse to select different folder

Ⓖ Click [Install] to start



⚠ Recommend NOT to run iSEC Guarding BEFORE plugging in Receiver.

Ⓗ Click [Yes] to install driver

Ⓙ Click [Finish] to leave Setup.

Trouble Shooting

This section offers some helpful information to overcome most of the problems you may encounter. We hope this section can help you to enjoy a pleasant setup. Before requesting service, please make the below checks. If you are in doubt about some of the check points, or if the remedies indicated in the chart do not solve the problem, please contact us.

To use this trouble shooting table, check software [Status Bar] to see current status.

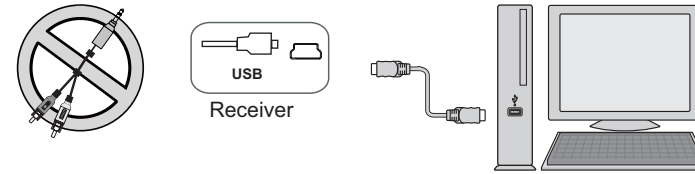
Problem	Possible Causes	Remedies
(USB) Device does not exist	Incompatible computer operating system	Upgrade operation system to Windows XP® (SP1 recommend) or VISTA® or Windows 7.
	Receiver connection problem	Unplug 5V power adapter and AV cable from receiver, use USB connection only to power up the receiver.
	Software and Receiver installed in wrong sequence.	Software and driver should be installed PRIOR to plugging in USB receiver. 1. Unplug receiver from USB 2. Exit software 3. Plug in receiver and wait for few seconds allowing Windows locate the receiver device. 4. Click on software icon to launch.
Software picks up image from PC or laptop system camera.	(USB) device set up wrongly.	Set USB device as [Digital Wireless Camera]. See [Setup - Pairing Camera] section as a guide..
No image shows in [Camera Display Window] (No Connection)	Camera not powered.	Check camera power connection.
	Camera and Receiver not paired yet.	Pair receiver and camera, see [Device Setup – Pairing Camera] section as a guide.
	Channel picked up wrongly.	Use [Camera Selection Bar] to pick up the paired camera.
Blurry image	Service range exceeded or bad reception	Bring camera closer to receiver; reposition camera and receiver antenna and secure it firmly to have better reception. Keep camera/receiver away from big scale metal or brick piece, wifi router or microwave oven to have better reception.
	Resolution sets low	Go to [Security Setup], click on [Record] tag, set [Format] to 640x480.
Camera viewable area partially disappear	Zoom In mode is activated	Press [Zoom Out] icon to have full area. See [Basic Operation] section as a guide.
Image missing from TV or Monitor	USB / AV Alternative	Choose image output either from AV (monitor/TV) <u>OR</u> USB.
Unreadable system message	Language selected wrongly	Only select language matching with Windows language version.
Motion Detection not working properly.	[Schedule Record] table set wrongly.	Software picks up specific camera at specific time segment as assigned in [Schedule Record] table. See [Security Setup – Record Schedule] section as a guide.
	Improper sensitivity level	Set proper sensitivity, smaller movements or further objects require higher sensitivity.
Video clip can not play back using other player program	Video codec (XVID) not installed	XVID decoder program is available in the installation CD folder [software] video decoder.exe . For Xvid later codec version, please visit Xvid official website at http://www.xvid.org
Image freeze in [Camera Display Window]	Resume from Windows power management (power saving) mode	Switch out then back to same camera to refresh image.
	Resume from other System Resource Exclusive program	
	Change monitor resolution	
Program terminated after 1-hour use.	None registered software	See [Registration] section to register.

Registration



- ① Click on [About, Registration] icon.
- ② Click on [Registration] from drop down list, this will open [Registry] dialog window.
- ③ Locate [Registration Name / Registration code] label on installation CD.
- ④ Put in [Registration Name / Registration code] in the dialog window.
- ⑤ Click on [Registry] to register.

Step2. Connect Receiver to Computer via USB port



⚠ Make sure to leave the A/V OUT cable and 5V DC power adapter UNPLUGGED PRIOR to USB connection.

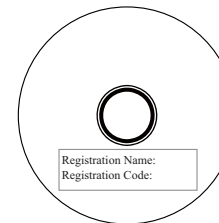
⚠ Connect the receiver to PC directly and NOT through a USB hub.

Step 3. Launch iSEC Guarding

Click on iSEC Guarding icon on your desktop screen to launch the program.

Step 4. Register iSEC Guarding (First Time Operation)

Registration name and code are available on the installation disk came with the original product purchased. Please register your iSEC Guarding or leave it blank for later registration. Unregistered version will limit user to trial operation of the program to one hour.



⚠ Registration can be done at later time, see [Registration] section as a guide

Step 5. Set USB device as [Digital Wireless Camera]

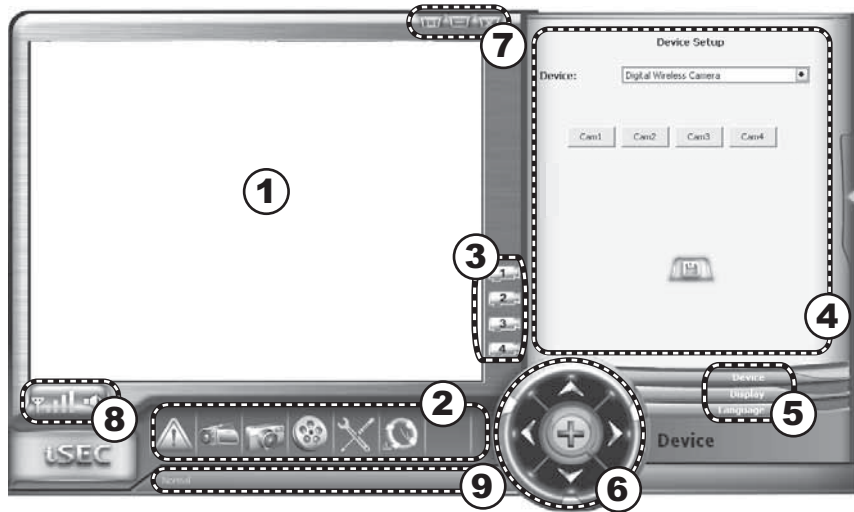
Click on [Device, Display, Language] icon on [Tool bar]; click on [Device] tag; select [Digital Wireless Camera] from drop down list; click on [Save] button to save and activate. See [Device Setup - Pairing Camera] section as a guide.

⚠ For proper display and operation, only set device as [Digital Wireless Camera].

Step 6. Locate Camera Channel

By default, system will locate Channel 1 automatically. Exiting camera(s) may be assigned to other channel(s). Camera(s) not yet paired will result in blank screen. Please refer to [Device Setup – Pairing Camera] and [Basic Operation] section as a guide.

Knowing iSEC Guarding Operation Window



① Camera Display Window

Double click the window to resize the display window to full screen or return to regular

② Tool Bar

Security Setup	Video Capture	Photo Snapshot	Event List	Device , Display Language	About Registration

Click on the icon once to activate Configuration Window

③ Camera Selection Bar

④ Configuration Window

⑤ Configuration Sub Tag

⑥ Pan / Tilt / Zoom Digital Control Panel

Zoom IN	Zoom OUT	Pan Left	Pan Right	Tilt Up	Tilt Down

Digital Pan & Tilt is operative only in Zoom In mode.

⑦ Window Placement Control

Minimize to System Tray (Right Bottom Connor)	Minimize Program (to Task Bar)	Close Program

⑧ Signal Strength / Alarm Indicator

Signal Strength Indicator in Yellow indicates signal strength range (1-4). Indicator in Red indicates connection is unavailable

Click on Alarm Indicator to mute / activate Alarm sound when Motion Detection is activated.

⑨ Status Bar

Language



① Click on [Device, Display, Language] icon to activate configuration window at the right.

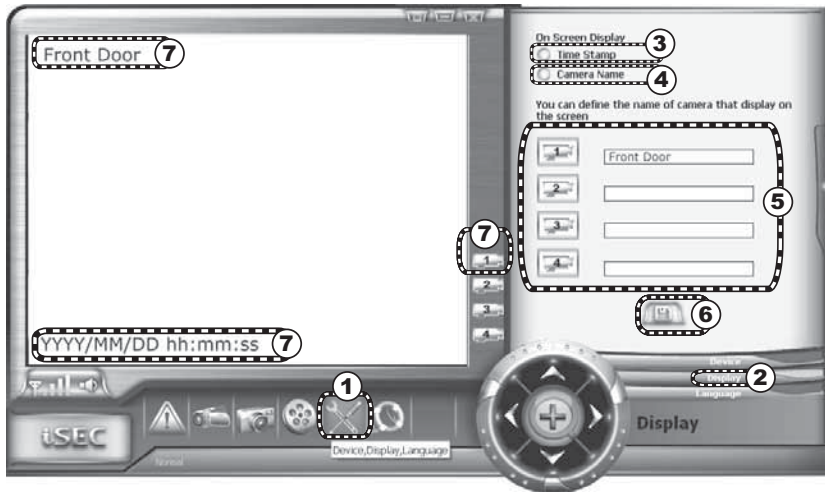
② Click on [Language] tag.

③ Click on flag icon to select the preferred language.

English	Traditional Chinese	Simplify Chinese	Japanese
German	French	Dutch	Spanish

For proper display, only select the language matching with the ones currently using by Windows OS.

On Screen Display



- ① Click on [Device, Display, Language] icon to activate configuration window at the right.
- ② Click on [Display] tag.
- ③ Show / Hide system clock in [Camera Display Window].
- ④ Show / Hide camera name in [Camera Display Window].
- ⑤ Name each camera.
- ⑥ Press [Save] button to save and activate [Display] changes.
- ⑦ [Camera Display Window] message displayed.

Basic Operation

- Use + / - to Zoom IN and Zoom OUT



- During Zoom In mode, use Control Panel to perform / adjust digital Pan and Tilt display view



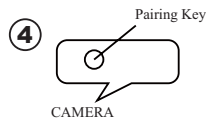
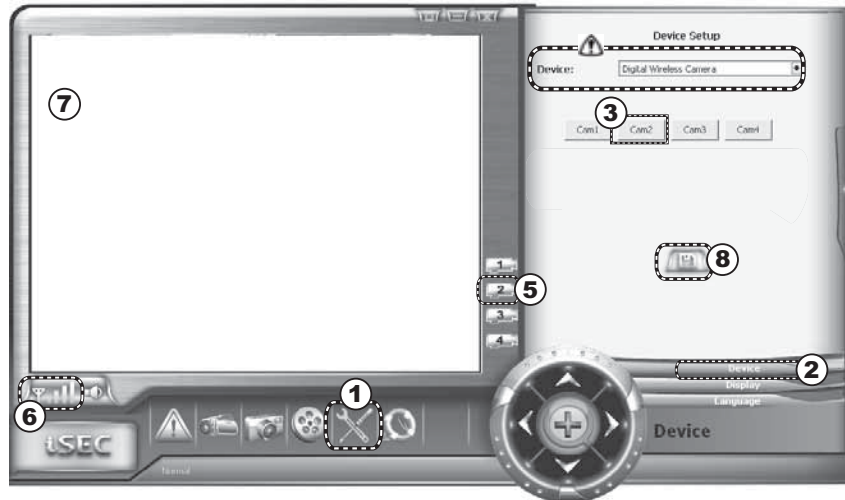
- Click on camera icon to select display channel manually (multi-camera system). For camera pairing, please see [Device Setup – Pairing Camera]



- Click on speaker icon to mute / activate [Motion Detection] alarm sound. To set up alarm sound, see [Security Setup - Motion Sensor]



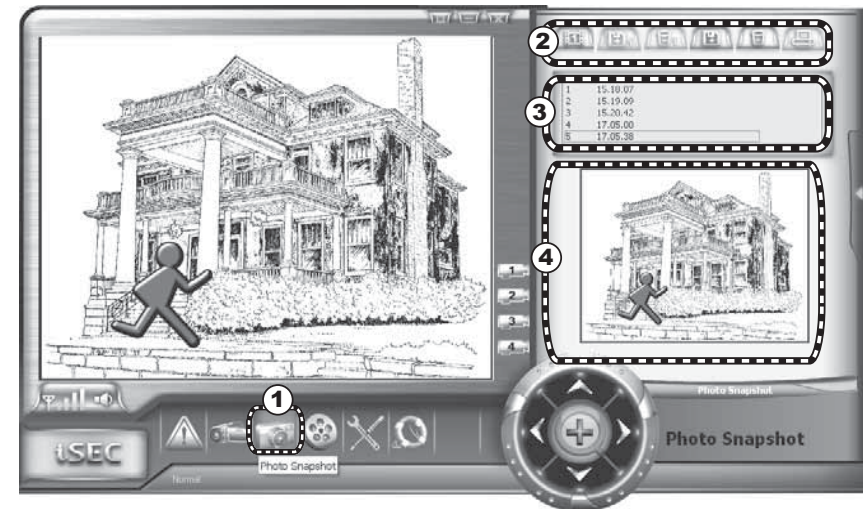
Device Setup – Pairing Camera









⚠ Recommend to bring camera closer for pairing before mounting the camera.

- ④ Click on [Device, Display, Language] icon to activate configuration window at the right.
- ② Click on [Device] tag.
- ⚠ Make sure the device is assigned to [Digital Wireless Camera]. Press [Save] button to save and activate the change of device.
- ⚠ For proper display and operation, only set device as [Digital Wireless Camera].
- ③ Click on desire camera channel for camera pairing , system will begin 60-seconds count down process.
- ④ Within 60-seconds , press [Pairing Key] locating on camera side.
- ⑤ Once pairing is complete, system will locate paired camera channel and image from camera will appear automatically.
- ⑥ Click on [Signal Strength Indicator] to check if the camera at the mounting location has good reception.
- ⑦ [Display Window] displays image from the newly paired camera.
- ⑧ Press [Save] button to save and activate [System Start-up].

Photo Snapshot



- ① Click on [Photo Snapshot] icon to activate configuration window at the right.
- ② Use control bar to capture image manually. System snapshots from image displaying currently.

					
Snapshot	Save snapshot as a new file.	Delete selected snapshot	Save all snapshots in the list.	Delete all snapshots in the list.	Print up selected snapshot (if printer available)

- ③ Snapshot file list.
- ④ Snapshot preview window.
- ⚠ The snapshot(s) are storing in the computer's cache memory and will be deleted automatically after program window closed.

Video Capture



- ① Click on [Video Capture] icon to activate configuration window at the right.
- ② Use control bar to record and play back manually. System records video files from images displaying currently.

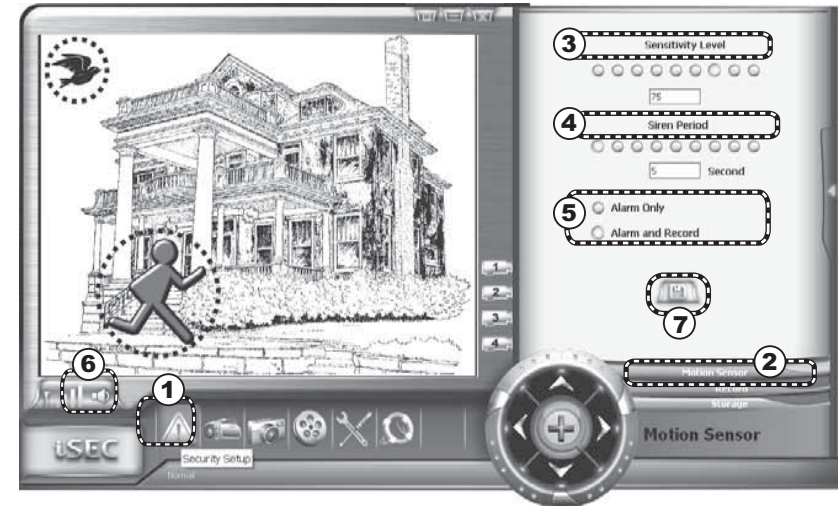
(blue) REC	Play	Pause	Fast Backward	Fast Forward	Stop
(red) Stop REC					

- ③ Video clip play back window. Double click to play back in full screen mode
- ④ Use function icons to proceed with next action.

Save recorded video clip as a new file.	Delete recorded video clip

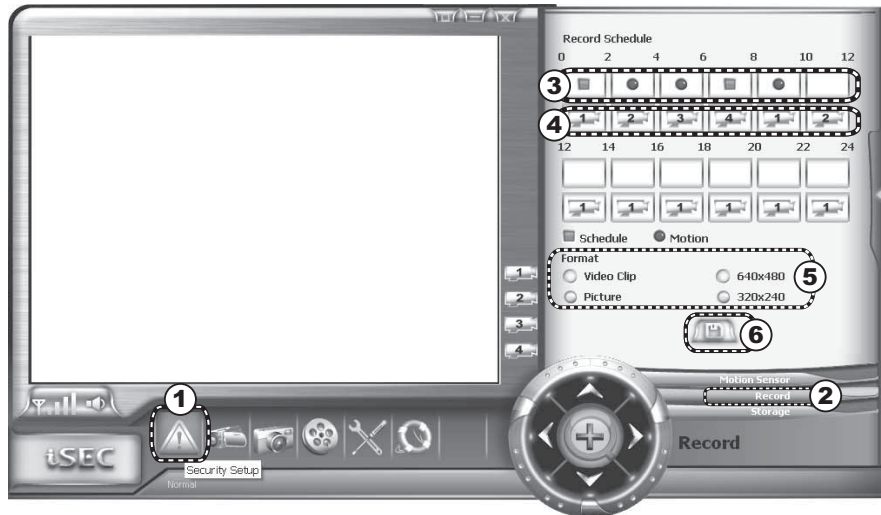
- ⚠ The recorded video clip(s) are stored in file path specified and displayed in eventlist.
- ⚠ Video clips are compressed by popular open-source XVID codec, if you intent to play video clips using other player program, e.g. Windows Media Player, make sure XVID codec is installed properly. XVID decoder is also available in the installation CD provided with product.

Security Setup – Motion Sensor



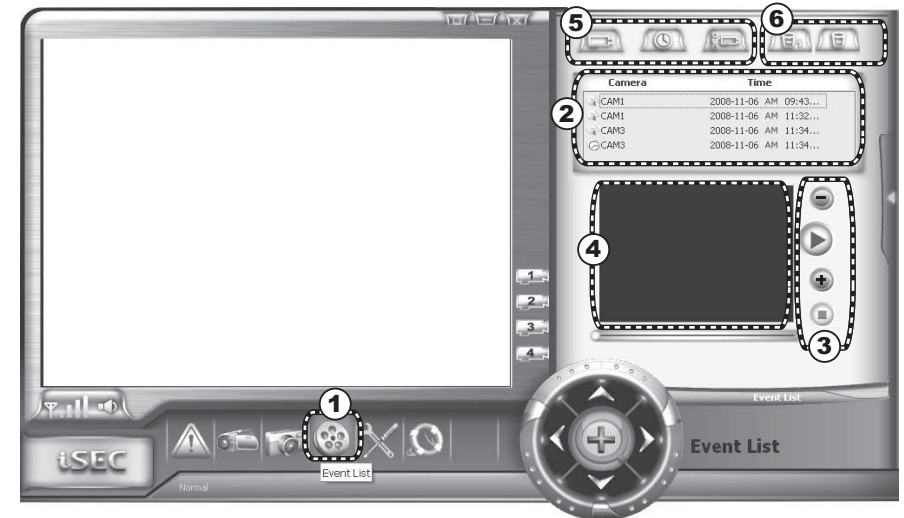
- ① Click on [Security Setup] icon to activate configuration window at the right.
- ② Click on [Motion Sensor] tag.
- ③ Set up [Sensitivity Level] by click on corresponding indicator from 0 to 100. Slight or distant movement (flying over bird) can be ignored by lowering sensitivity; larger or closer movement (people passing through) can be detected by raising sensitivity.
- ④ Set up [Siren Period] from 5 to 45 seconds ,every time system detects movement [Motion Detection] alarm sound will set off and will last according to user setting.
- ⚠ Computer speaker and audio card need to be ON enable proper functioning .
- ⑤ Set up system action when the movement is detected.
- ⑥ Click on speaker icon to mute / activate [Motion Detection] alarm sound.
- ⑦ Press [Save] button to save and activate [Motion Sensor] changes.
- ⚠ To have [Motion Sensor] operate properly, [Record Schedule] setup is required. See [Record Schedule] section.

Security Setup – Record Schedule



- ① Click on [Security Setup] icon to activate configuration window at the right.
- ② Click on [Record] tag.
- ③ Click on specific time segment once for Continuous Schedule recording (blue square); twice for Motion Detection recording (red circle) and three times for no recording (empty). Each time segment represents a period of 2 hours.
- ④ Click on the camera box (below the time segment selected for recording)once or multiple times, until the required channel number is showing, system will switch to the channel number selected for recording (system picks up one camera at a time)
- ⚠ After setting up channel number, system switches to assigned channel automatically after 3-minutes idle time.
- ⑤ Set up recording file format and resolution, the settings take effect on every schedule.
- ⚠ Resolution setting will also take effect on [Camera Display Window].
- ⑥ Press [Save] button to save and activate [Recording Schedule] changes.

Event List



- ① Click on [Event List] icon to activate configuration window at the right.
- ② Click on files in the list to select and play back video clip.
- ③ Use control bar to play back.

Play	Pause	Fast Backward	Fast Forward	Stop

- ④ Video clip play back window.
- ⑤ Sort files in the list by using the file sorting icons.

Sort by Camera Name	Sort by Time	Sort by Mode

- ⑥ Use trash bin icons to delete file.

Delete selected file	Delete all files in the list

- ⚠ To locate the video clip files storing in computer HDD ,go to [Security Setup], click on [Storage] tag, system shows the default folder path.
- ⚠ Video clips are compressed by popular open-source XVID codec, if you intent to play video clips using other player program, e.g. Windows Media Player, make sure XVID codec is installed properly. XVID decoder is also available in the installation CD provided with product.