



CD004 Sweex USB to Parallel Cable

### Introduction

First of all, many thanks for purchasing this Sweex USB to Parallel Cable.

This cable enables you to simply add a parallel printer port to your desktop, PC or notebook. This only requires 1 free USB port.

To ensure this product operates correctly, we advise you to carefully read this manual first. If despite this manual you still experience problems during installation or operation of this product, go to [www.sweex.com](http://www.sweex.com) and look under the heading service & support.

In order to fully enjoy the Sweex USB to Parallel Cable, it is important to observe a number of things:

- Do not expose the Sweex USB to Parallel Cable to extreme temperatures. Do not place the cable in direct sunlight or in the direct vicinity of heating elements.
- Do not use the Sweex USB to Parallel Cable in extremely dusty or moist surroundings.
- Protect the cable against powerful shocks or jolts - they may damage the internal electronics.
- Never attempt to open the device yourself - it will cause the warranty to lapse.

### Software installation under Windows 98SE

We advise you to ensure the operating system is up-to-date before starting the installation. This is easy to check by starting up Internet Explorer and selecting the option "Windows Update" in the "Extra" menu.

Once the hardware has been detected, Windows shows the following screen:



Click "Next".



Here, select the option "Search for the best driver" and click "Next".



Only tick the last option: “Specify a location”. Insert the Sweex CD-ROM in the CD-ROM player. Go to the Sweex CD-ROM via “Browse”, and select the folder “Drivers”. In this folder, select the relevant operating system; win98. Then click “Next”.

Note: In the illustration, “X” stands for our CD-ROM drive. This may be a different drive letter!



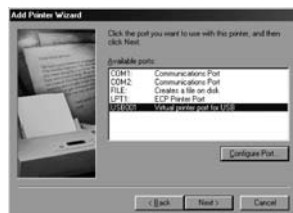
Click “Next” and “Finish”. Now the hardware has been installed successfully.

## Software Installation under Windows 2000, XP and Vista

No drivers are required for installation under Windows 2000, Windows XP and Vista; they are all incorporated in the operating system and the Sweex USB to Parallel Cable will be installed automatically.

### Printer settings

When installing a printer, ensure that the correct printer port is selected:



When adding a printer, opt for “USB001-Virtual printer port for USB”

### Warranty

All products under the Sweex brand are warranted for a period of three years. We do not grant support or warranties for any software and/or (rechargeable) batteries included. Settlement of guarantee only takes place via the dealer where you have purchased the product in question.

The rightful owner has and retains title to all brand names and related rights mentioned in this manual.