

momit[®]
Smart technology for everyone



momit Smart Thermostat

Thermostat Instalation Guide

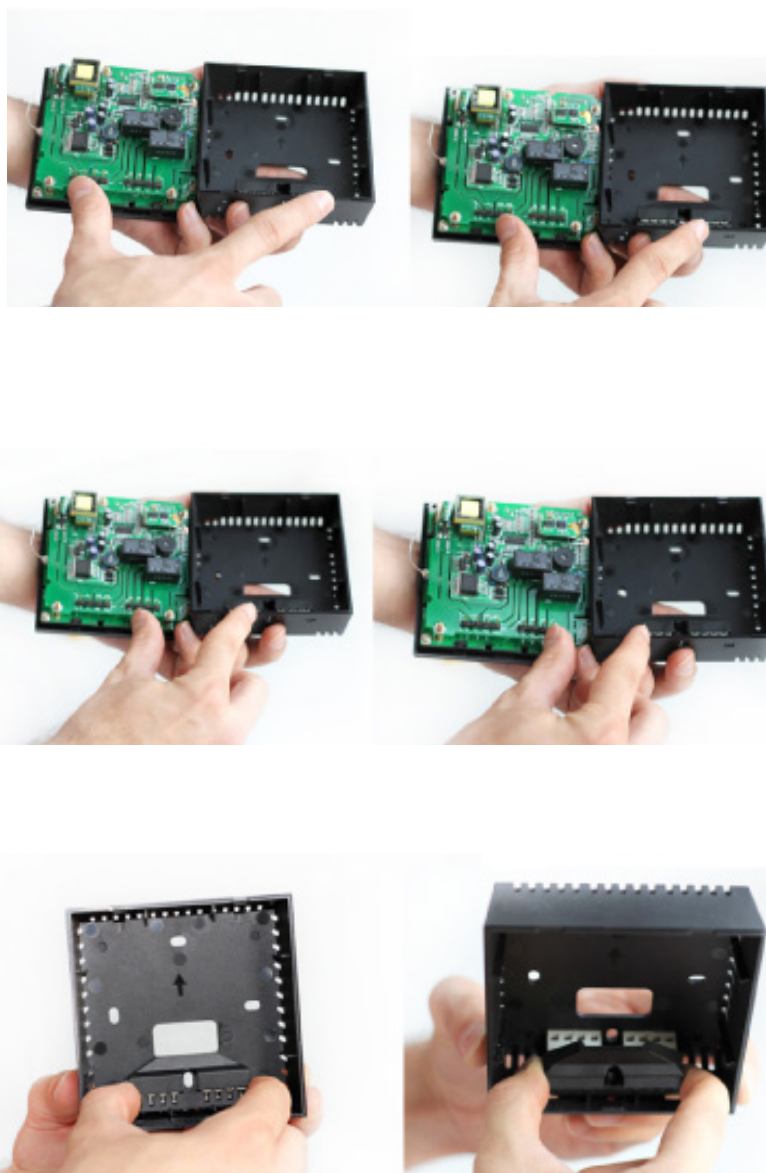
- 1 Open momit Smart Thermostat. To do so, insert the tip of a flathead screwdriver into the openings found at the bottom



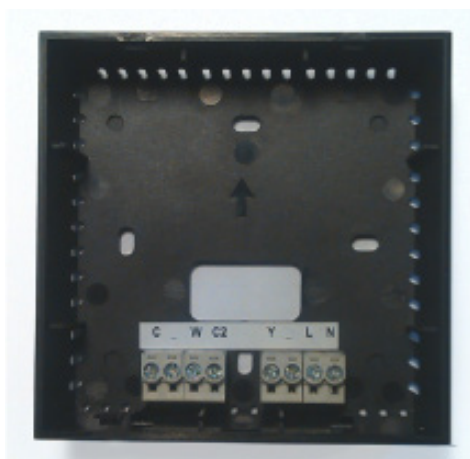
- 2 By prying, press gently in the openings. Make a hinge move to finish opening the thermostat housing without forcing the connection pins.



- 3 Remove the back of the housing. There will be labeled positions where the cables of your heating and/or air conditioning must go. You will also see several openings in which will be the fixings of the thermostat to the wall.

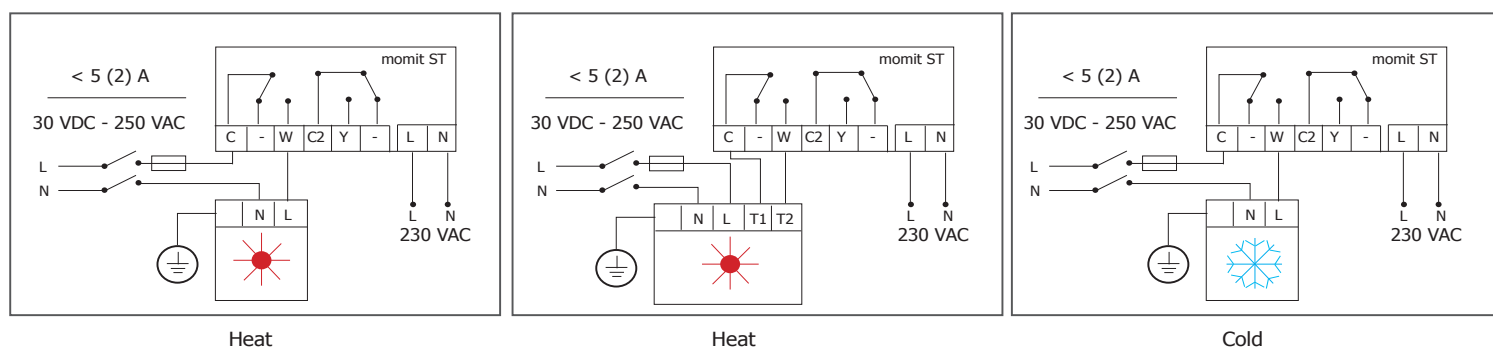


4 Here you can see identified the connections diagram marked on the clamps:

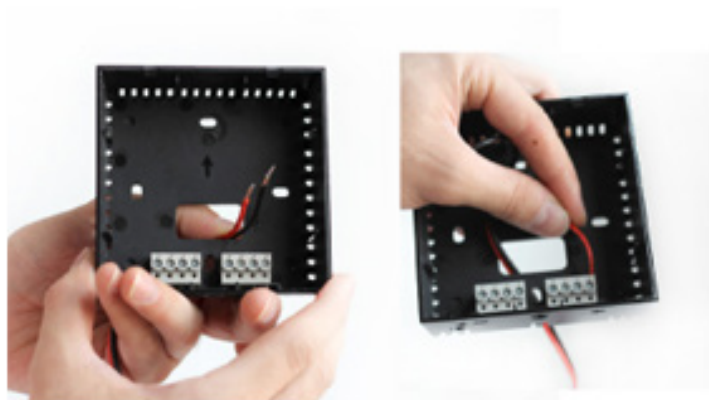


C	W	C2	Y	L	N
Heat		Cold		Power	

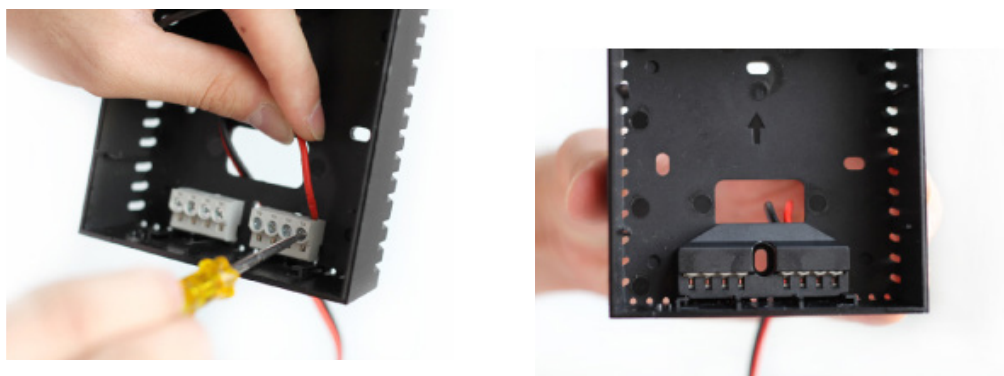
Connections diagram:



5 Through the center hole of the back of the housing of momit Smart Thermostat you have to introduce the cables from your previous installation or, in its absence, those from the pre-installation of a thermostat in your home.



- 6 With the help of a screwdriver put the wires in proper position, considering the marks will be inside the casing.



- 7 Close the Smart Thermostat momit housing. Take the front of momit Smart Thermostat. You will see at the top there are protrusions that, together with the back part of the housing, will work as a hinge. Place it properly and support the rest of the thermostat by pressing gently. Press until the tabs at the bottom of the housing make a clicking sound, as sign that it has been wedged properly.

momit[®]
Smart technology for everyone

www.momit.com