

EU-4308

Quick Installation Guide

06-2017/ v1.0

Edimax Technology Co., Ltd.

No. 278, Xinhu 1st Rd., Neihu Dist., Taipei City, Taiwan

Email: support@edimax.com.tw

Edimax Technology Europe B.V.

Fijenhof 2, 5652 AE Eindhoven, The Netherlands

Email: support@edimax.nl

Edimax Computer Company

3350 Scott Blvd., Bldg.15 Santa Clara, CA 95054, USA

Live Tech Support: 1(800) 652-6776

Email: support@edimax.com

I. Produktinformasjon	1
I-1. Pakkens innhold.....	1
I-2. Systemkrav.....	1
I-3. Sikkerhetsanvisninger.....	1
II. Installasjon	2
II-1. Windows.....	3
II-2. Mac OS.....	6

Multi-Language Quick Installation Guide (QIG) on the CD

Čeština: Českého průvodce rychlou instalací naleznete na přiloženém CD s ovladači

Deutsch: Finden Sie bitte das deutsche S.A.L. beiliegend in der Treiber CD

Español: Incluido en el CD el G.R.I. en Español.

Français: Veuillez trouver l'français G.I.R ci-joint dans le CD

Italiano: Incluso nel CD il Q.I.G. in Italiano.

Magyar: A magyar telepítési útmutató megtalálható a mellékelt CD-n

Nederlands: De nederlandse Q.I.G. treft u aan op de bijgesloten CD

Polski: Skrócona instrukcja instalacji w języku polskim znajduje się na załączonej płycie CD

Português: Incluído no CD o G.I.R. em Portugues

Русский: Найдите Q.I.G. на русском языке на приложенном CD

Türkçe: Ürün ile beraber gelen CD içinde Türkçe Hızlı Kurulum Kılavuzu'nu bulabilirsiniz

Українська: Для швидкого налаштування Вашого пристрою, будь ласка, ознайомтесь з інструкцією на CD

I. Produktinformasjon

I-1. Pakkens innhold



3-Port USB 3.0 Gigabit Ethernet Hub



CD-ROM



QIG

I-2. Systemkrav

- Intel Premium III 1GHz (over eller tilsvarende)
- 256MB RAM/CD-ROM
- 100MB Harddisk plass (minimum)
- USB Type C port
- Windows XP/Vista/7/8/8.1/10 eller over, Mac OS 10.6 – 10.10 eller over, Linux Kernel 4.x/3.x/2.6x


I-3. Sikkerhetsanvisninger

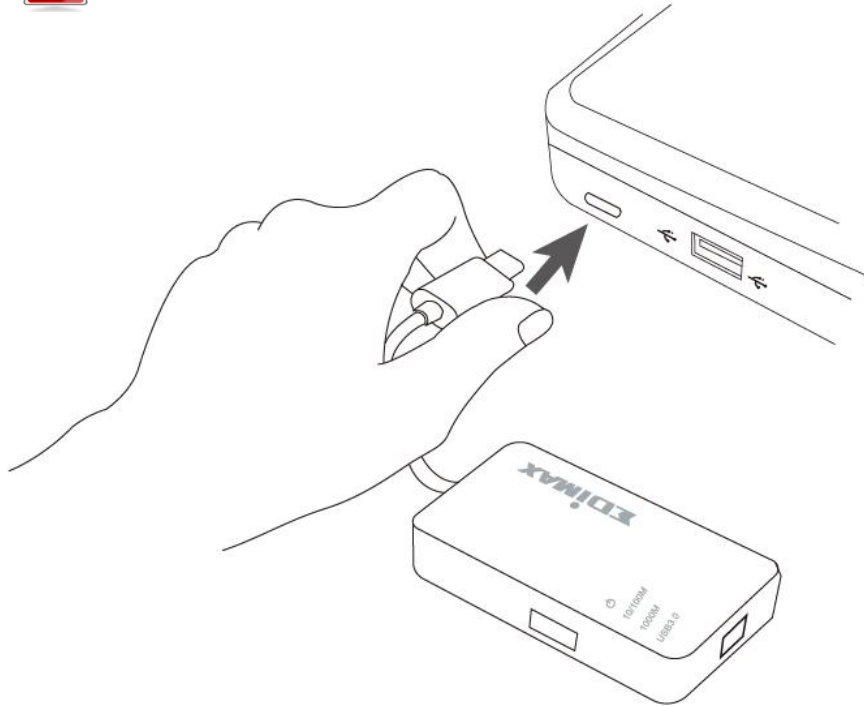
For å sikre trygg bruk av apparatet for brukerne, vennligst les og følg de følgende sikkerhetsanvisningene.

- 1.** USB Fast Internet Hub er ment for innendørs bruk, ikke plasser den trådløse adapteren utendørs.
- 2.** Ikke plasser USB Fast Internet Hub på eller nært varme/fuktige steder, så som kjøkken eller bad.
- 3.** USB Fast Internet Hub inneholder små deler som er farlige for barn under 3 år. Vennligst plasser den trådløse adapteren utenfor rekkevidde av barn.
- 4.** Det er ingen deler inne i den USB Fast Internet Hub som brukeren kan vedlikeholde. Dersom du har problemer med den trådløse adapteren, vennligst kontakt forhandleren din for hjelp.
- 5.** USB Fast Internet Hub er et elektrisk apparat, stopp derfor straks å bruke det dersom det blir vått. Kontakt en erfaren elektriker for ytterligere hjelp.

II. Installasjon

1. Slå på PC-en og sett USB-adapteren i en ledig USB type C port på PC-en.


 **Bruk aldri makt for å tvinge inn USB-adapter.**



2. Sett inn den medfølgende CD-en i CD-stasjonen på datamaskinen.

 **Oppsettassistenten er også tilgjengelig for nedlasting fra Edimax-websiden.**

3. For **Windows** åpnes installasjonsassistenten. For **Mac**-bruke åpnes CD-ens "Mac" mappe.

 **Dersom CD-en ikke starter automatisk eller dersom du har lastet ned installasjonsassistenten, vennligst bla til mappen "Autorun" eller "Mac" mappen på CD-en for henholdsvis Windows eller Mac brukere.**

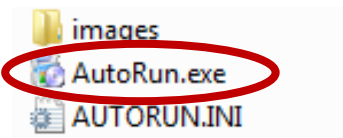
4. Vennligst følg instruksene i det aktuelle kapittelet for ditt operativsystem.

II-1. Windows

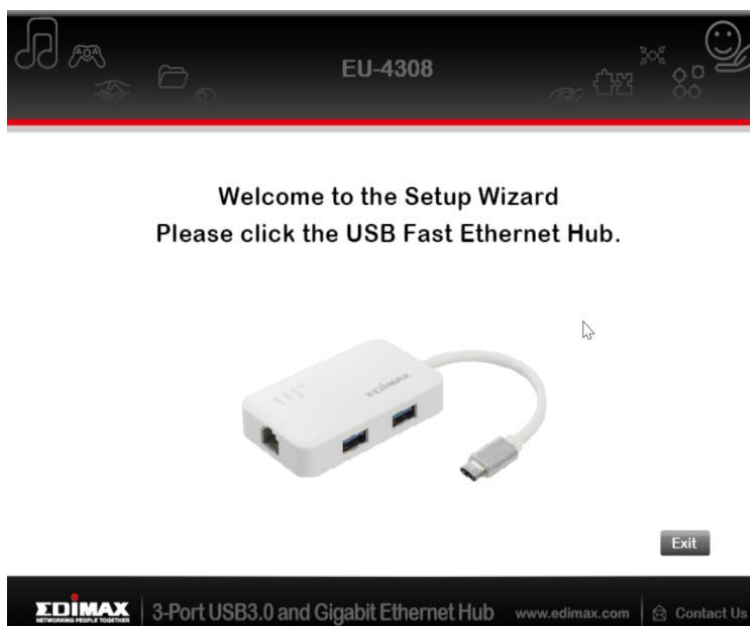
Installere driver



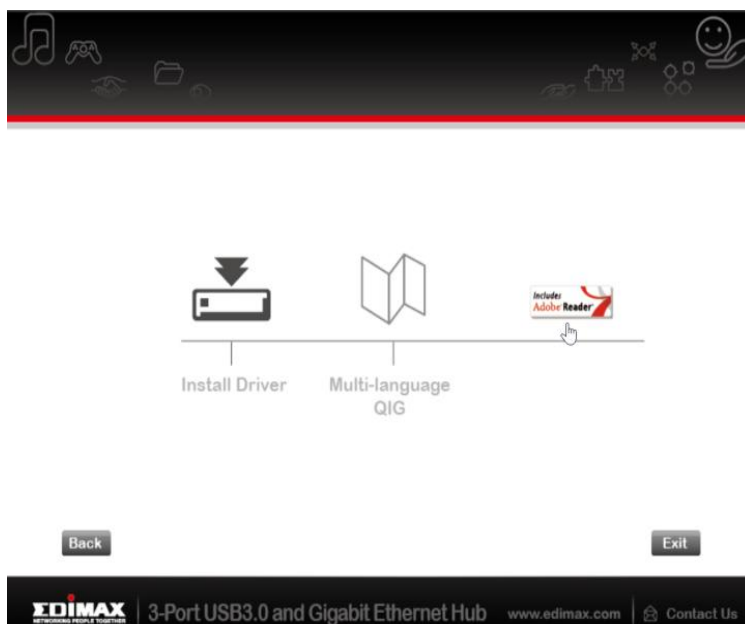
Dersom CD-en ikke startet kjøringen automatisk, åpne filen "Autorun.exe" for å starte installasjonsassistenten.



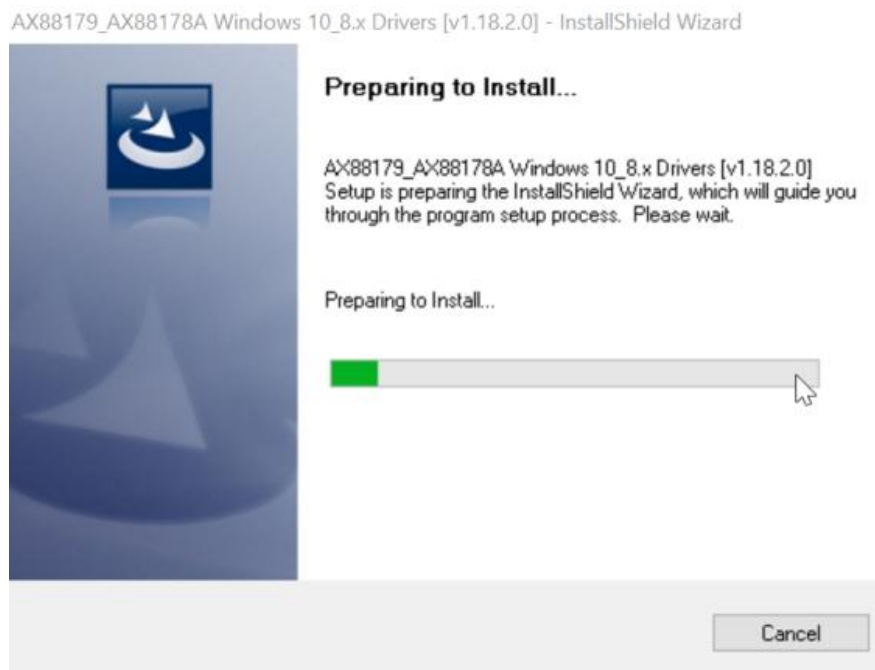
1. Klikk på USB Fast Ethernet adapter for å fortsette.



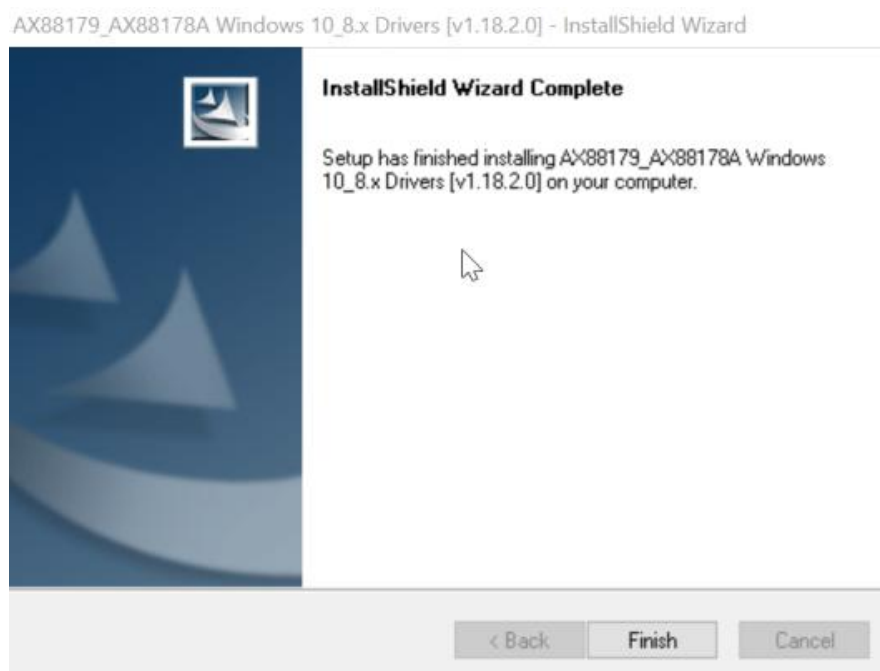
2. Klikk "Installer driver" for å installere driveren.



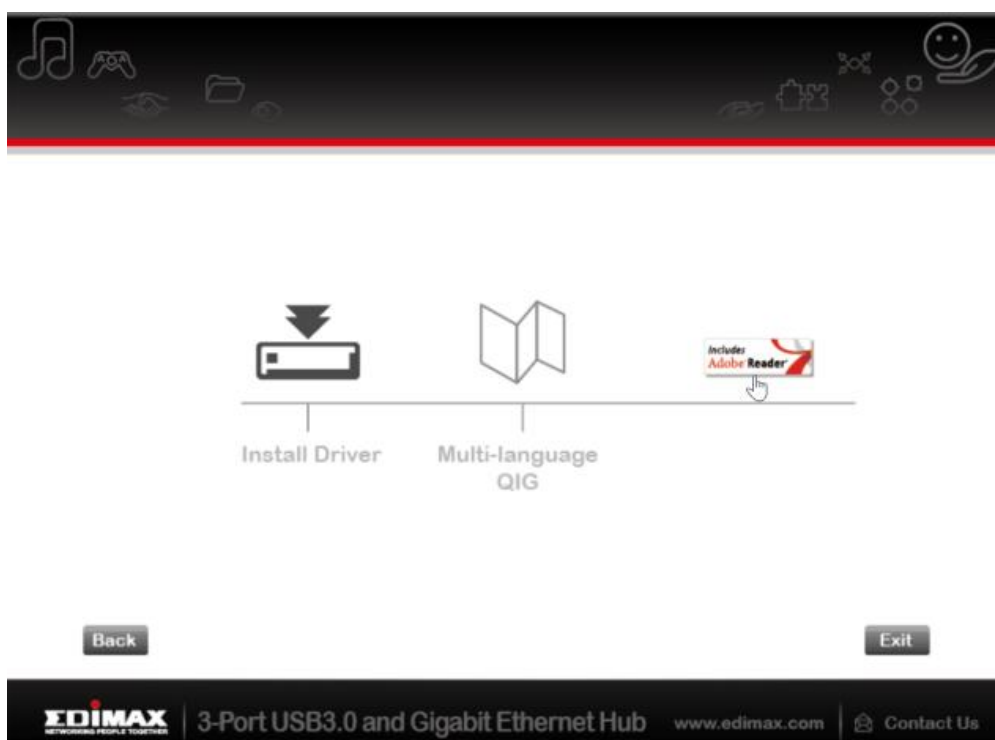
3. Du vil se følgende "Forbereder installasjon ..." popup-vinduet.



4. Klikk "Avslutt" for å bekrefte driverinstallasjonen



5. Klikk "Avslutt" for å lukke installasjonsassistenten.

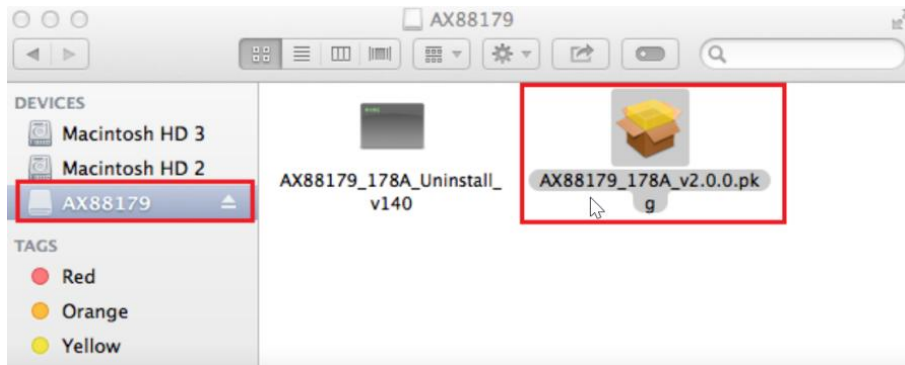


 **Multispråk QIG er også inkludert på CD-ROM. For å åpne klikk på "Multispråk QIG".**

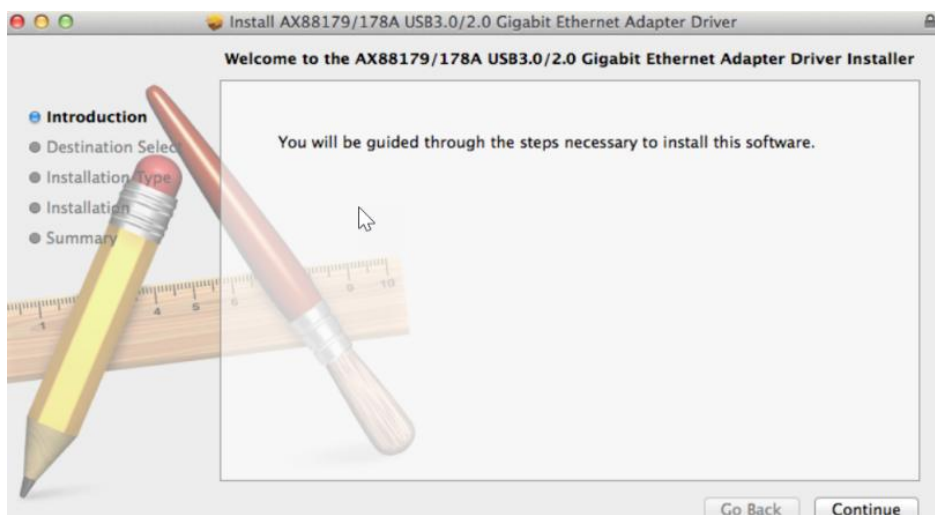
II-2. Mac OS

Installere driver

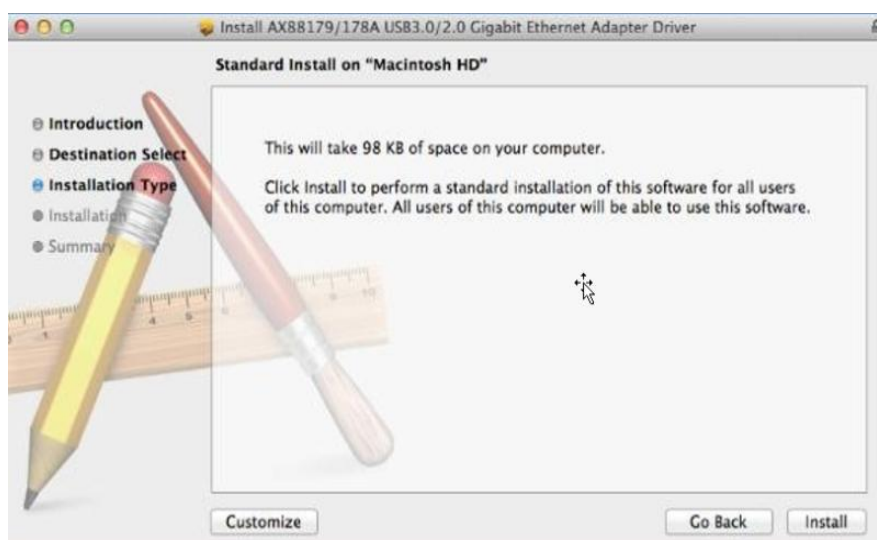
1. Klikk på "AX88179_178A.dmg", følgende "AX88179" virtuelle disk vises på skrivebordet på din Mac OSX system (vil automatisk fjernes når Mac OSX systemet restarteres).



2. Klikk på "AX88179_178A_vx.x.x.pkg" ("x.x.x" er driverens revisjonsnummer), og følgende dialog for oppsett av driveren vises. Klikk "Fortsett" for å starte installasjonen og følg anvisningene for å fortsette installasjonen.



3. Klikk "Installer" for å fortsette installasjonen.



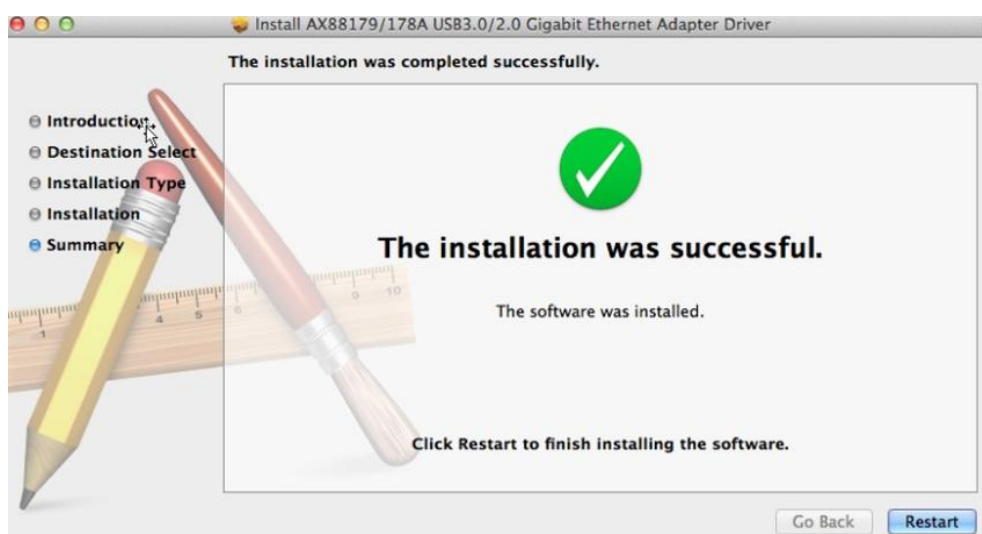
4. Du kan måtte legge inn brukernavn/passord i løpet av installasjonen.



5. Klikk "Fortsett installasjon" for å fortsette installasjonen.

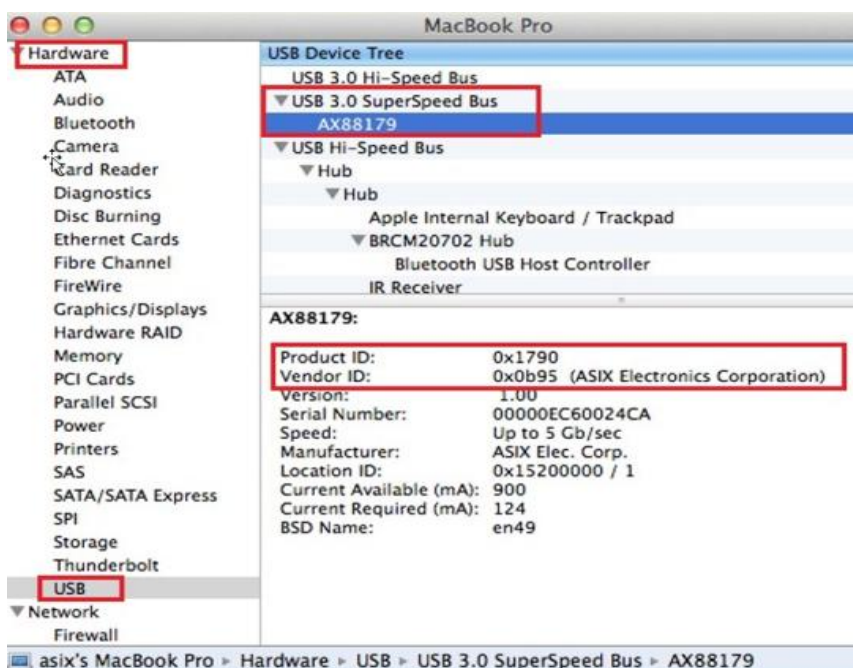


6. Klikk "Restart" for å starte ditt Mac OSX system på nytt og avslutte installasjonen.



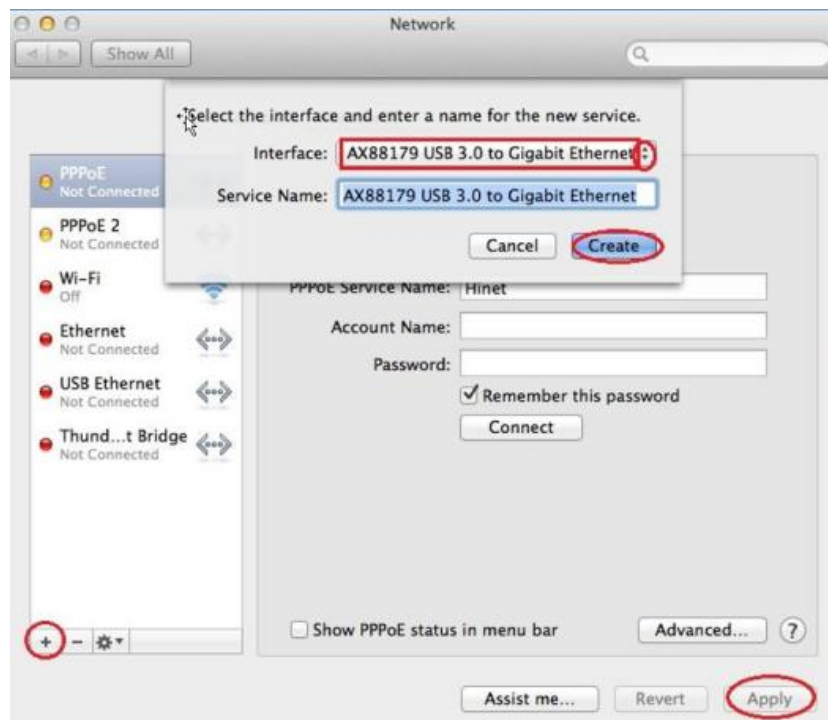
7. Etter å ha startet opp ditt Mac OSX system, plugg din EU-4308 USB-dongle inn i en USB type C port på ditt Mac OSX system. Se følgende informasjon for å dobbeltsjekke at din USB-dongle er korrekt identifisert av ditt Mac OSX system og at AX88179/AX88178A Mac OSX er installert korrekt.

- (1) Du kan sjekke leverandør/produkt ID-informasjon for din USB-dongle herfra.

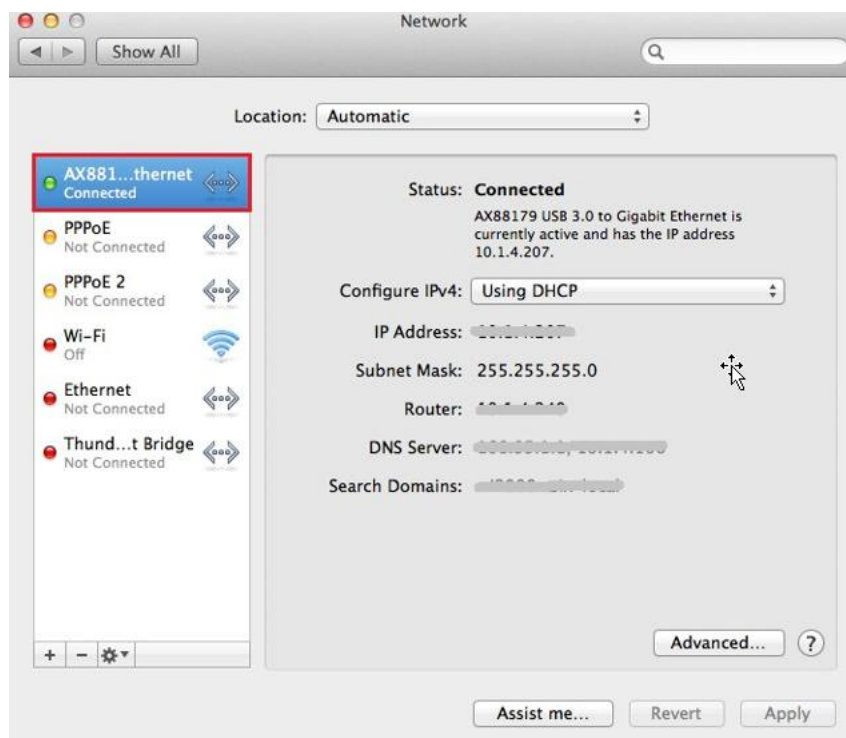


- (2) Du kan sjekke informasjon om den installerte AX88179/AX88178A Mac OSX driver-versjonen ved hjelp av "kextstat"-kommandoen

8. Velg Apple-meny, Systempreferanser og klikk på nettverk. Velg ny "AX88179 USB 3.0 til Gigabit Ethernet" nettverksgrensesnitt og trykk "Opprett" fulgt av "Anvend" for å ta i bruk det nye nettverksgrensesnittet.



9. Den nye "AX88179 USB 3.0 til Gigabit Ethernet" driveren skal nå være klar.



Federal Communication Commission Interference Statement

This equipment has been tested and found to comply with the limits for a Class B digital device, pursuant to Part 15 of FCC Rules. These limits are designed to provide reasonable protection against harmful interference in a residential installation. This equipment generates, uses, and can radiate radio frequency energy and, if not installed and used in accordance with the instructions, may cause harmful interference to radio communications. However, there is no guarantee that interference will not occur in a particular installation. If this equipment does cause harmful interference to radio or television reception, which can be determined by turning the equipment off and on, the user is encouraged to try to correct the interference by one or more of the following measures:

1. Reorient or relocate the receiving antenna.
2. Increase the separation between the equipment and receiver.
3. Connect the equipment into an outlet on a circuit different from that to which the receiver is connected.
4. Consult the dealer or an experienced radio technician for help.

FCC Caution

This device and its antenna must not be co-located or operating in conjunction with any other antenna or transmitter. This device complies with Part 15 of the FCC Rules. Operation is subject to the following two conditions: (1) this device may not cause harmful interference, and (2) this device must accept any interference received, including interference that may cause undesired operation. Any changes or modifications not expressly approved by the party responsible for compliance could void the authority to operate equipment.

Federal Communications Commission (FCC) Radiation Exposure Statement

This equipment complies with FCC radiation exposure set forth for an uncontrolled environment. In order to avoid the possibility of exceeding the FCC radio frequency exposure limits, human proximity to the antenna shall not be less than 2.5cm (1 inch) during normal operation.

Federal Communications Commission (FCC) RF Exposure Requirements

This EUT is compliance with SAR for general population/uncontrolled exposure limits in ANSI/IEEE C95.1-1999 and had been tested in accordance with the measurement methods and procedures specified in OET Bulletin 65 Supplement C. The equipment version marketed in US is restricted to usage of the channels 1-11 only. This equipment is restricted to *indoor* use when operated in the 5.15 to 5.25 GHz frequency range.

R&TTE Compliance Statement

This equipment complies with all the requirements of DIRECTIVE 1999/5/EC OF THE EUROPEAN PARLIAMENT AND THE COUNCIL of March 9, 1999 on radio equipment and telecommunication terminal equipment and the mutual recognition of their conformity (R&TTE). The R&TTE Directive repeals and replaces in the directive 98/13/EEC (Telecommunications Terminal Equipment and Satellite Earth Station Equipment) As of April 8, 2000.

Safety

This equipment is designed with the utmost care for the safety of those who install and use it. However, special attention must be paid to the dangers of electric shock and static electricity when working with electrical equipment. All guidelines of this and of the computer manufacture must therefore be allowed at all times to ensure the safe use of the equipment.

EU Countries Intended for Use

The ETSI version of this device is intended for home and office use in Austria, Belgium, Bulgaria, Cyprus, Czech, Denmark, Estonia, Finland, France, Germany, Greece, Hungary, Ireland, Italy, Latvia, Lithuania, Luxembourg, Malta, Netherlands, Poland, Portugal, Romania, Slovakia, Slovenia, Spain, Sweden, Turkey, and United Kingdom. The ETSI version of this device is also authorized for use in EFTA member states: Iceland, Liechtenstein, Norway, and Switzerland.

EU Countries Not Intended for Use

None

EU Declaration of Conformity

- English:** This equipment is in compliance with the essential requirements and other relevant provisions of Directive 2014/30/EU, 2014/35/EU.
- Français:** Cet équipement est conforme aux exigences essentielles et autres dispositions de la directive 2014/30/EU, 2014/35/EU.
- Čeština:** Toto zařízení je v souladu se základními požadavky a ostatními příslušnými ustanoveními směrnic 2014/30/EU, 2014/35/EU.
- Polski:** Urządzenie jest zgodne z ogólnymi wymaganiami oraz szczególnymi warunkami określonymi Dyrektywą UE 2014/30/EU, 2014/35/EU.
- Română:** Acest echipament este în conformitate cu cerințele esențiale și alte prevederi relevante ale Directivei 2014/30/EU, 2014/35/EU.
- Русский:** Это оборудование соответствует основным требованиям и положениям Директивы 2014/30/EU, 2014/35/EU.
- Magyar:** Ez a berendezés megfelel az alapvető követelményeknek és más vonatkozó irányelveknek (2014/30/EU, 2014/35/EU).
- Türkçe:** Bu cihaz 2014/30/EU, 2014/35/EU. direktifleri zorunlu istekler ve diğer hükümlerle ile uyumludur.
- Українська:** Обладнання відповідає вимогам і умовам директиви 2014/30/EU, 2014/35/EU.
- Slovenčina:** Toto zariadenie spĺňa základné požiadavky a ďalšie príslušné ustanovenia smerníc 2014/30/EU, 2014/35/EU.
- Deutsch:** Dieses Gerät erfüllt die Voraussetzungen gemäß den Richtlinien 2014/30/EU, 2014/35/EU.
- Español:** El presente equipo cumple los requisitos esenciales de la Directiva 2014/30/EU, 2014/35/EU.
- Italiano:** Questo apparecchio è conforme ai requisiti essenziali e alle altre disposizioni applicabili della Direttiva 2014/30/EU, 2014/35/EU.
- Nederlands:** Dit apparaat voldoet aan de essentiële eisen en andere van toepassing zijnde bepalingen van richtlijn 2014/30/EU, 2014/35/EU.
- Português:** Este equipamento cumpre os requisitos essenciais da Directiva 2014/30/EU, 2014/35/EU.
- Norsk:** Dette utstyret er i samsvar med de viktigste kravene og andre relevante regler i Direktiv 2014/30/EU, 2014/35/EU.
- Svenska:** Denna utrustning är i överensstämmelse med de väsentliga kraven och övriga relevanta bestämmelser i direktiv 2014/30/EU, 2014/35/EU.
- Dansk:** Dette udstyr er i overensstemmelse med de væsentligste krav og andre relevante forordninger i direktiv 2014/30/EU, 2014/35/EU.
- suomen kieli:** Tämä laite täyttää direktiivien 2014/30/EU, 2014/35/EU. oleelliset vaatimukset ja muut asiaankuuluvat määräykset.

FOR USE IN

AT	BE	CY	CZ	DK	EE	FI	FR	RU				
DE	GR	HU	IE	IT	LV	LT	LU	MT	NL	PL	PT	UA
SK	SI	ES	SE	GB	IS	LI	NO	CH	BG	RO	TR	



WEEE Directive & Product Disposal



At the end of its serviceable life, this product should not be treated as household or general waste. It should be handed over to the applicable collection point for the recycling of electrical and electronic equipment, or returned to the supplier for disposal.

Declaration of Conformity

We, Edimax Technology Co., Ltd., declare under our sole responsibility, that the equipment described below complies with the requirements of the European R&TTE directives.

Equipment: USB 3.0 Gigabit Ethernet Adapter
Model No.: EU-4308

The following European standards for essential requirements have been followed:

Directives 2014/30/EU

EN 55032:2015 Class B
EN 55024:2010
EN 61000-4-2: 2009
EN 61000-4-3: 2006+A1:2008+A2:2010
EN 61000-4-4: 2012
EN 61000-4-5: 2014
EN 61000-4-6: 2014+AC:2015
EN 61000-4-8: 2010
EN 61000-4-11: 2004

Directives 2014/35/EU

Safety (LVD) : IEC 60950-1:2005 (2nd Edition)+Am 1:2009+Am 2:2013
EN 60950-1:2006+A11:2009+A1:2010+A12:2011+A2:2013

Edimax Technology Europe B.V.
Fijenhof 2,
5652 AE Eindhoven,
The Netherlands

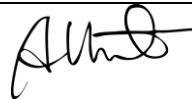
a company of :
Edimax Technology Co., Ltd.
No. 278, Xinhua 1st Rd.,
Neihu Dist., Taipei City,
Taiwan

Signature:

Printed Name: Vivian Ma
Title: Director
Edimax Technology Europe B.V.

Date of Signature: June, 2017

Signature: _____



Printed Name: Albert Chang

Title: Director
Edimax Technology Co., Ltd.





EDIMAX
NETWORKING PEOPLE TOGETHER

The logo features the Greek letter sigma (Σ) as the first letter of 'EDIMAX'. A small red dot is positioned above the 'I'. The background is a dark grey band filled with various white line-art icons, including a handshake, musical notes, a smiley face, a game controller, and a computer monitor.