

MCS9865
Win98/ME User Manual**Revision 0.1**

All information in this document is believed to be accurate as of the publish date. MosChip Semiconductor products are not authorized for use as critical components in life support devices or systems without the express written approval of the president of MosChip Semiconductor, Ltd. MosChip Semiconductor believes the information in this document to be accurate and reliable. However, it is subject to change without notice. No responsibility is assumed by MosChip Semiconductor for its use, nor for infringement of patent or other rights of third parties. No part of this document may be reproduced, or transmitted in any form or by any means without prior consent of MosChip Semiconductor, Ltd.

Copyright © 2007 MosChip Semiconductor All Rights Reserved.

Table of Contents

1. INTRODUCTION	3
2. OBTAINING DRIVER	3
3. DRIVER INSTALLATION	3
4. VERIFYING DRIVER INSTALLATION	6
5. SERIAL PORT PROPERTIES SHEET:	6
6. PARALLEL PORT FEATURES:	10
7. UNINSTALLING DRIVERS:	11
8. SUGGESTIONS / SUPPORT:	11

1. Introduction

This document will present the steps needed to install / Un-install the Software drivers of MosChip PCI to Serial / Parallel products or another manufacturer's product based on MosChip MCS9865 series.

General Description:

2. Obtaining Driver

Please write to Techsupport@moschip.com for driver requirement.

3. Driver Installation

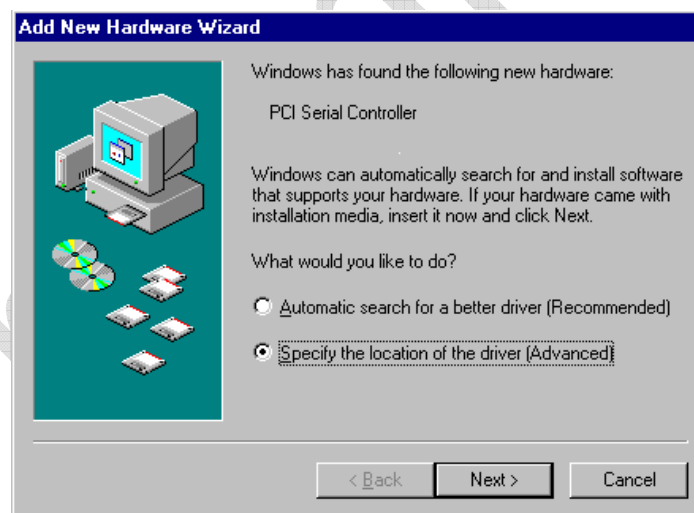
Installing drivers for the first time:

Make sure that you have not inserted PCI card into PCIe slot.

There is no setup for WIN98/ME:

The driver path has to be given for driver installation:

You will see a window as shown below:



As shown in the above window, give the specific path for driver installation. When the "Software **Installation**" browse for the driver path and click NEXT.



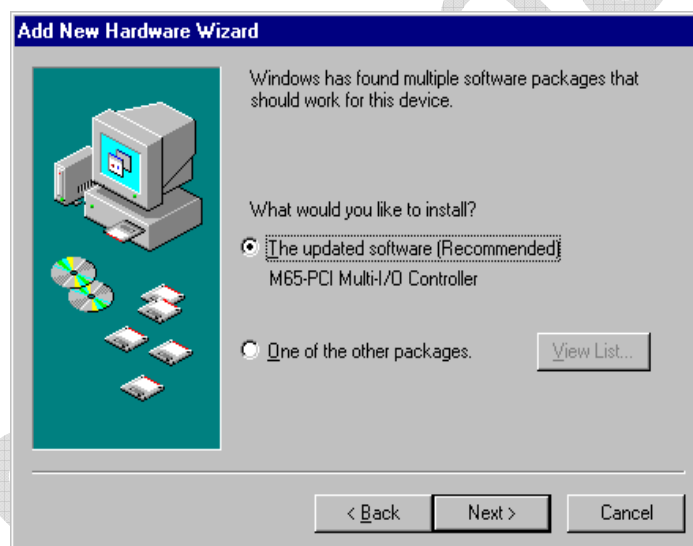
New Hardware wizard will start and you have to select **"NEXT"** option as shown below:



Click on **"Finish"** to complete the MosChip MCS9865 Peripheral Port installation.



Follow the same above procedure to install the remaining MCS9865 peripheral ports.



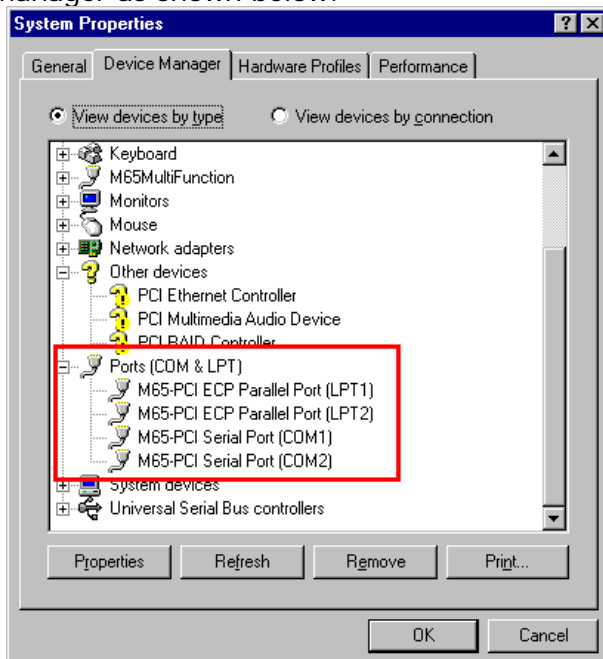
After installing the driver, you must RESTART your computer as show in below window.



4. Verifying Driver Installation

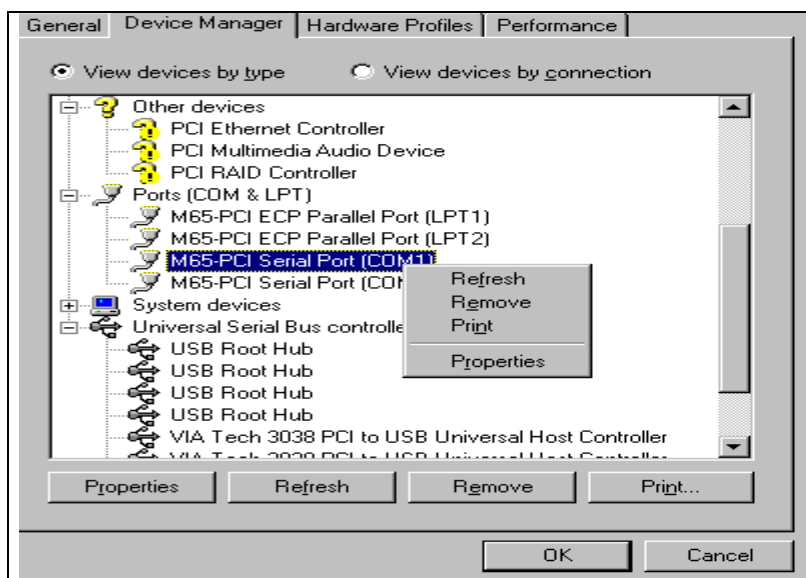
Please check the required configuration from Device Manager to confirm the proper installation.

For Example proper detection of the MCS9865 PCI Card (2Serial-2Parallel) can be confirmed by viewing the Device manager as shown below:



5. Serial Port Properties Sheet:

In the Device Manager Right Click on required Port and click on “**Properties**” Option to open the Properties.



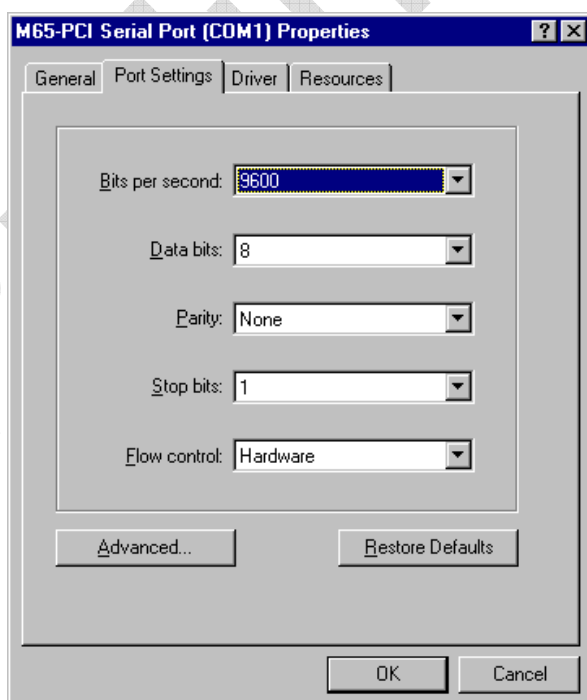
GENERAL TAB:

The **"GENERAL"** TAB provides you details about "Device Type", "Manufacturer" and "Device Status".



Port Settings TAB:

The "Port Settings" TAB is used to configure parameters of the Serial Port.



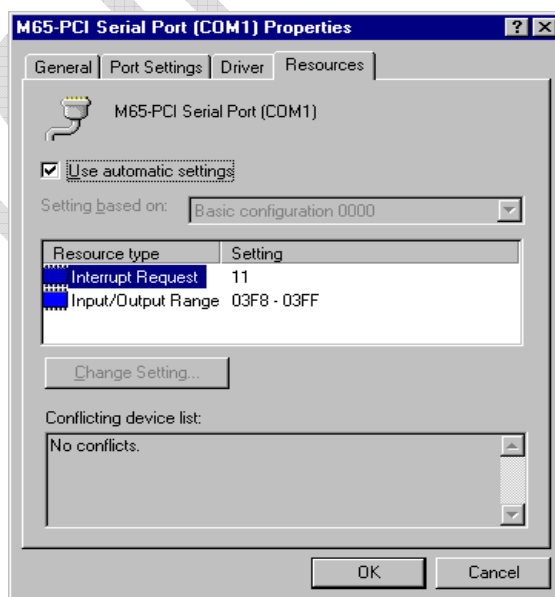
Bits per Second selection is used to set the default Baud rate settings.
Data bits selection will have options 4,5,6,7 and 8 data bits.
Parity selection will have Even, Odd, None, Mark and Space parity settings.
Stop bits selection will have 1, 1.5 and 2 selections.
Flow Control selection will have Xon/Xoff, Hardware and None settings.

Driver TAB:



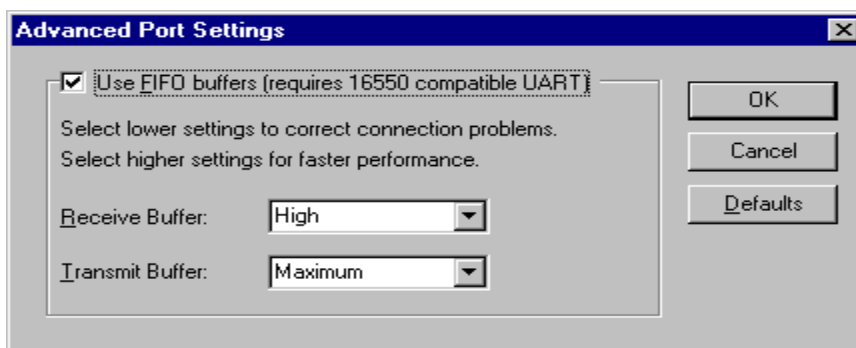
The **Driver TAB** shows the details of Driver Provider, Driver Release Date, Driver version is installed on your PC and Digital Signer details as shown above.

Resource TAB:



The **RESOURCE TAB** gives the details of IRQ, IO Ranges and Memory ranges that are assigned to a particular Serial Port.

ADVANCED TAB allows the user to configure Serial Port Features and Mode changes as explained below.



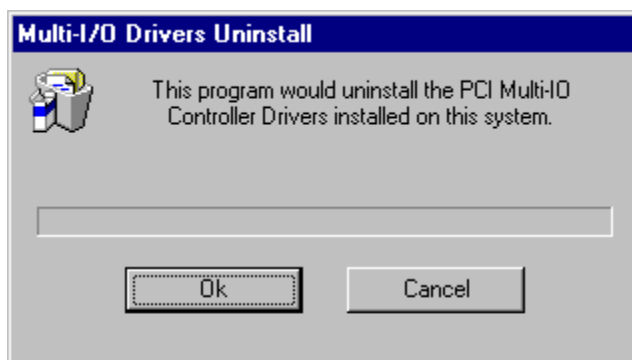
6. Parallel Port Features:

Parallel Port Features: By default Parallel Port will be in **AUTO** mode. In this mode, Parallel port mode will be automatically configured to the required mode after handshaking with the connected device.



8. Uninstalling Drivers:

To Uninstall MCS9865 drivers, run "**MOSCHIP_PCIUninst.exe**" file available in the driver disk.



Note 1: Make sure that you should uninstall any previous driver before installing updated drivers.

Note 2:

- 1: MCS9865 Win 98/ME driver supports upto 115200 baudrate only.
- 2: MCS9865 Win 98/ME driver serial port features mode selections doesn't support 422/485 Mode.
- 3: MCS9865 Win 98/ME driver doesn't supports the Hardware flow control and custom Baudrate. Uses the default baudrates and upto 115200 only
- 4: MCS9865 Win 98/ME driver doesn't supports for Selecting DMA Mode.
- 5: MCS9865 Win 98/ME driver serial port features mode selections SPP/CBFIFO/ECP/EPP Modes.

9. Suggestions / Support:

If you have any feedback or any query please feel free to contact techsupport@moschip.com