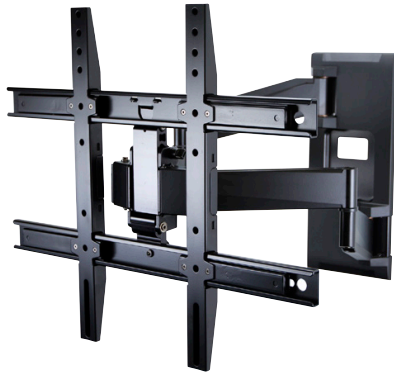


OE80FM product information sheet



The OE80FM is a low profile, full motion mount for the popular TV size range of 32–52". The OmniElite series is a high-end line of mounts for larger, lighter TVs. Whether looking for a fixed, tilt or full motion mount, the OmniElite series will provide a solution with all the bells and whistles for a truly superior installation.

Product Benefits*

- Full motion with left and right pan (great for rooms with multiple viewing areas)
- Low profile design
- Cast aluminum arms for superior strength
- Highly stylized to compliment HD and Ultra HD panels
- Unique joint design offers easy, smooth movement of the TV
- Special channel routes cables from TV to wall, concealing wires
- Lift n' Lock makes installation a three step process
- TV tilts forward to reduce screen glare (great for rooms with windows)
- DIY friendly mounting template

Product Specifications*

Fits most: 32–52" TVs

Supports up to: 80 lbs (36.3 kg)

Tilt: Up to +10°

Mounting profile: 2.5" (6.4 cm)

Extension from wall: 19.5" (49.5 cm)

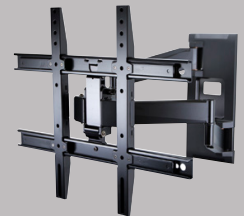
VESA compliance: 200x200 to 600x400

Mounting: Single-stud or solid wall

Warranty: 5 years

Color: Black

Series



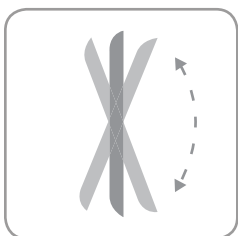
OE80FM



OE80T



OE80F



Designed with patented gravity tilt and precise tolerances to make adjusting a TV easy and reliable.

*Subject to change

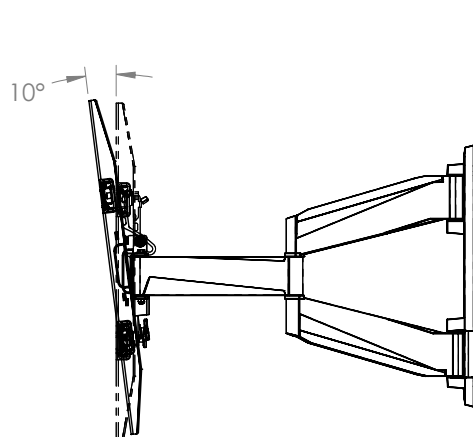
800.MOUNT.IT (800.668.6848)



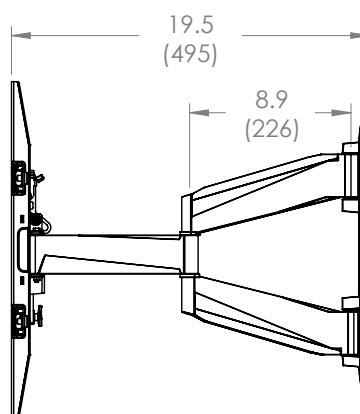
OMNI MOUNT

12122013

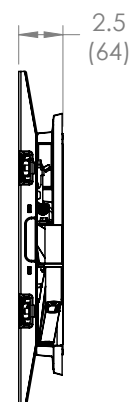
OE80FM technical data sheet



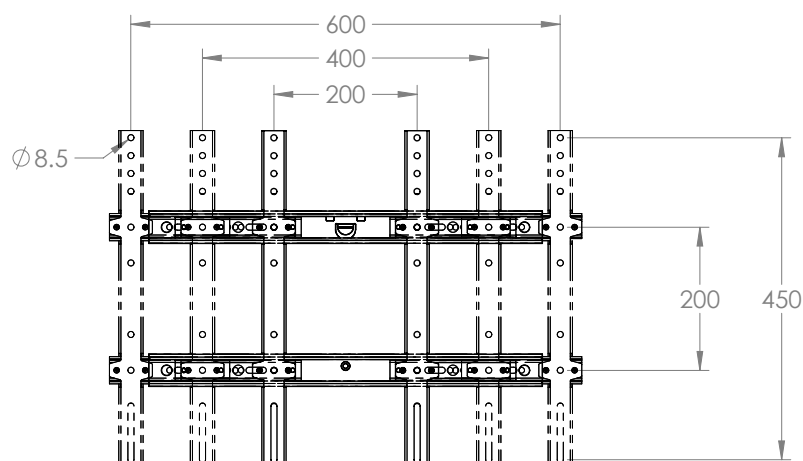
TILT RANGE



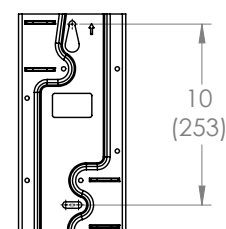
EXTENDED



NESTED



UNIVERSAL ADAPTER VESA PATTERNS (MM)



WALL PLATE MOUNTING HOLES

inches (mm)

	Packaging UPC	MC UPC
Americas	698833041958	10698833041955
International	698833041958	10698833041955

	Dimensions WxDxH Inches (mm)	Wt lbs (kg)	Qty
Box	26.5 x 21.3 x 5.5 (673x540x140)	23.8 (10,8)	NA
MC	27 x 22 x 12 (686x559x305)	51.5 (23,3)	2

Box Contents	Qty
Wall plate/arm	1
Universal adapter	1
Top wall plate cover	1

Box Contents	Qty
Bottom wall plate cover	1
Instruction manual	1
Complete hardware kit	1