

OE150FM product information sheet



The OE150FM is a low profile, full motion mount for the most popular large TV size range of 47–80". The OmniElite series is a high-end line of mounts for larger, lighter TVs. Whether looking for a fixed, tilt or full motion mount, the OmniElite series will provide a solution with all the bells and whistles for a truly superior installation.

Product Benefits*

- Full motion with left and right pan (great for rooms with multiple viewing areas)
- Low profile design
- Cast aluminum arms for superior strength
- Highly stylized to compliment HD and Ultra HD TVs
- Unique joint design offers easy, smooth movement of the TV
- Special channel routes cables from TV to wall, concealing wires
- Lift n' Lock makes installation a three step process
- TV tilts forward to reduce screen glare (great for rooms with windows)
- DIY friendly mounting template

Product Specifications*

Fits most: 47–80" TVs

Supports up to: 150 lbs (68 kg)

Tilt: Up to +10°

Mounting profile: 2.6" (6,6 cm)

Extension from wall: 16.7" (42,4 cm)

VESA compliance: 200x100 to 800x400

Mounting: Single-stud, 16" & 24" Double-stud or solid wall

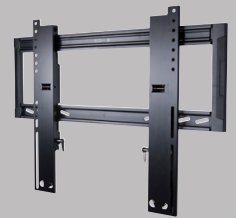
Warranty: 5 years

Color: Black

Series



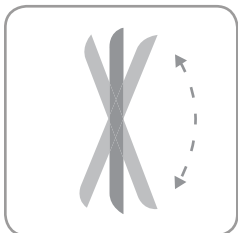
OE150FM



OE150T



OE200F



Designed with patented gravity tilt and precise tolerances to make adjusting a TV easy and reliable.

*Subject to change

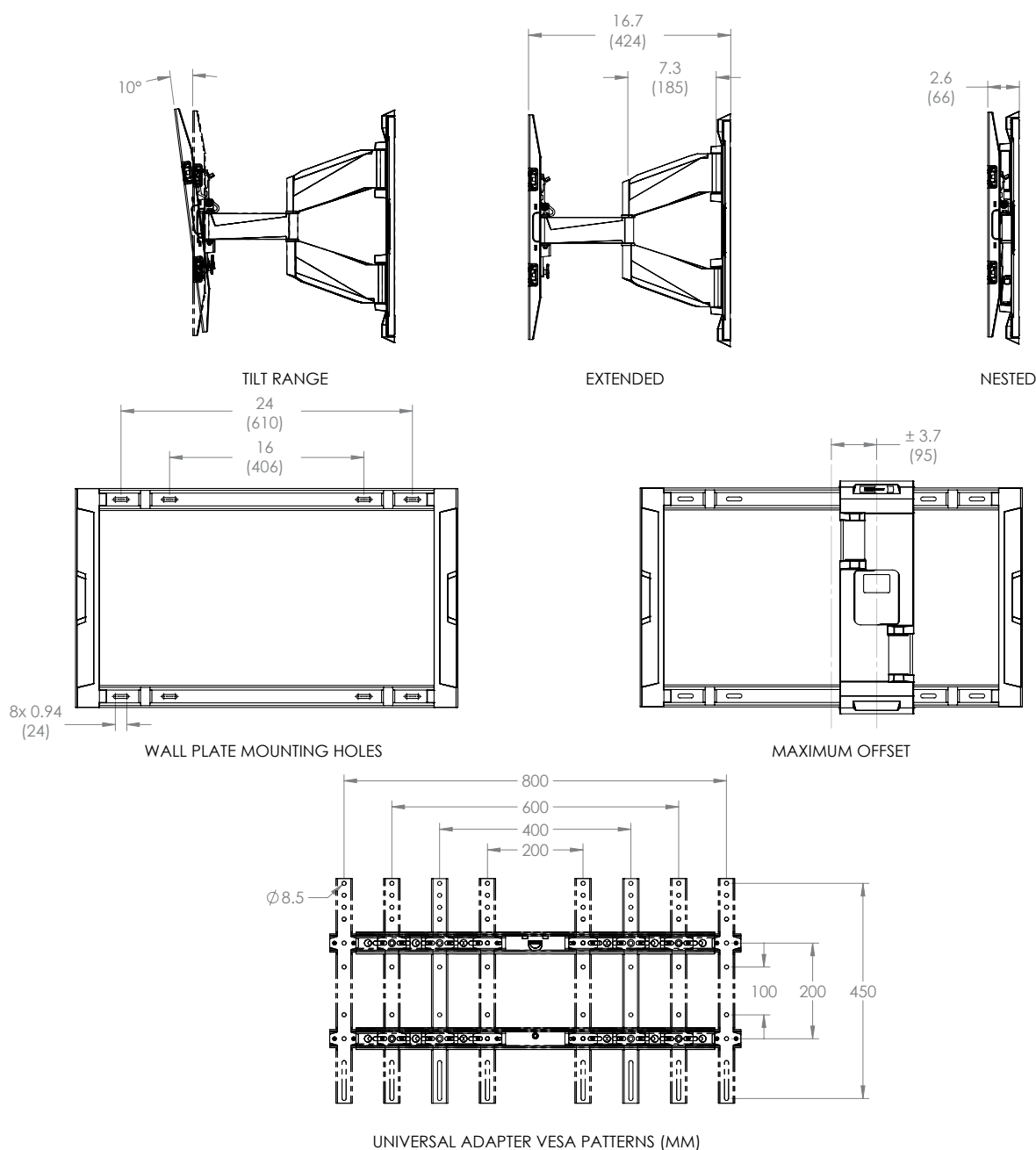
800.MOUNT.IT (800.668.6848)



OMNI MOUNT

03242014

OE150FM technical data sheet



inches (mm)

| | Packaging UPC | MC UPC |
|---------------|---------------|----------------|
| Americas | 698833041965 | 10698833041962 |
| International | 698833041965 | 10698833041962 |

| | Dimensions WxDxH Inches (mm) | Wt lbs (kg) | Qty |
|-----|-------------------------------|-------------|-----|
| Box | 35 x 22 x 5.8 (890x558x146) | 34.7 (15.8) | NA |
| MC | 35.7 x 22.8 x 7 (905x578x178) | 38.1 (17.3) | 1 |

| Box Contents | Qty |
|-------------------------|-----|
| Wall plate/arm | 1 |
| Universal adapter | 1 |
| Top wall plate cover | 1 |
| Bottom wall plate cover | 1 |

| Box Contents | Qty |
|-----------------------|-----|
| Wall plate cover | 8 |
| Instruction manual | 1 |
| Complete hardware kit | 1 |